

Northwestern University The Feinberg School of Medicine

Fact Book



Contents

Structure and organization	3
Resources	9
Academic programs	14
Medical Students	17
Graduate medical education and PhD training	26
Faculty	32
Research resources	38
Comparative rankings	48

The Feinberg School of Medicine Executive Summary 2005-2006

Faculty

1,555 Full-time
1,580 Volunteer and part time
260 Research track

Students

695 Medical
1,000 Residents/Fellows
270 Postdoctoral Fellows
240 Graduate Students
200 Graduate professional
students
120 Master's students

Financing

Operating Revenues	\$1,026M
Endowment Base	\$1,102M
Sponsored Research	\$278M

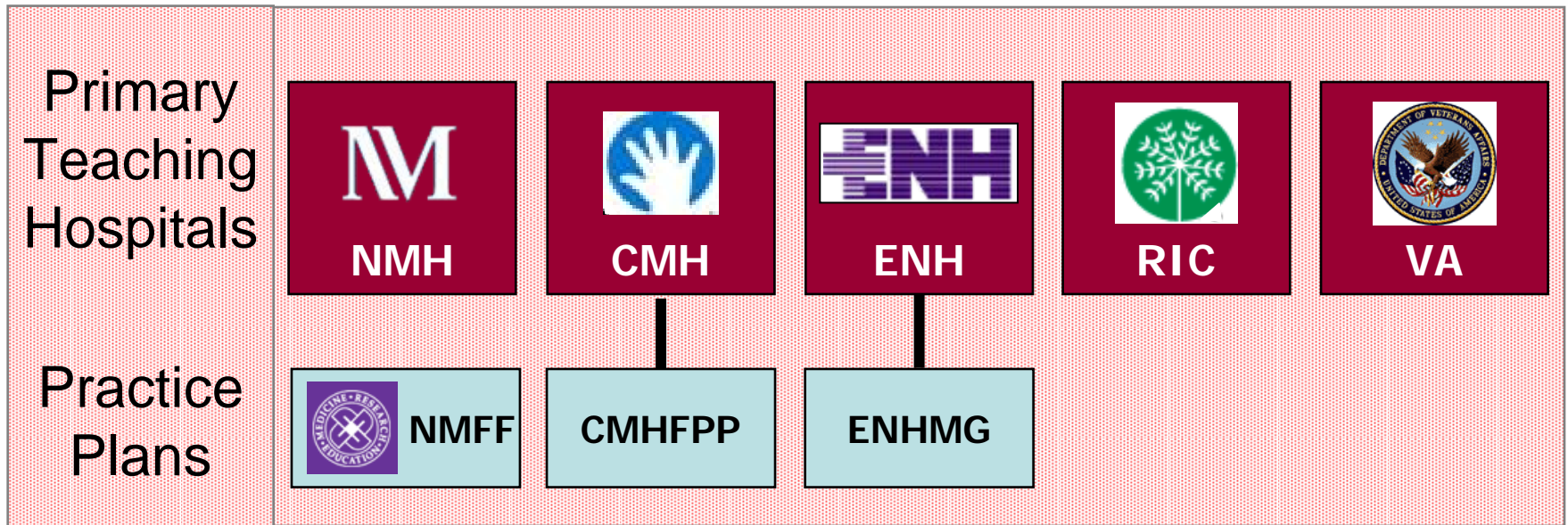
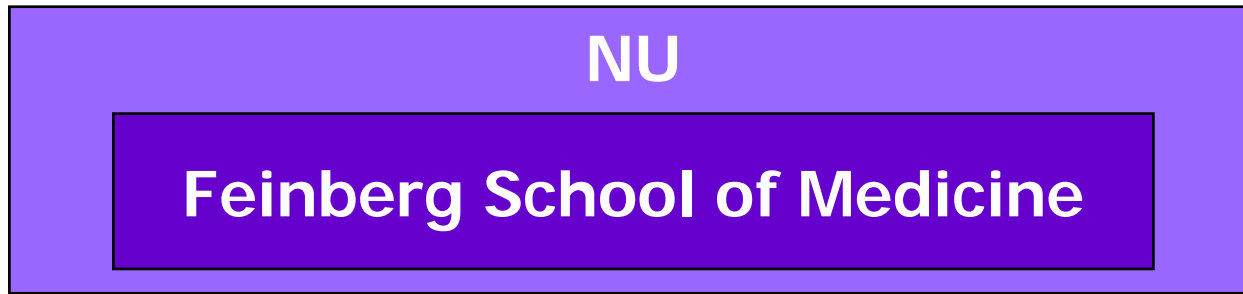
Academic Space

750,000 net sq. ft.
520,000 for research

Academic Units

5 Basic science departments
19 Clinical departments
16 Centers and Institutes

Northwestern Academic Medical Center



Other Affiliated hospitals

LEGEND:

NMH: Northwestern Memorial Hospital
NMFF: Northwestern Medical Faculty Foundation
CMHC: Children's Memorial Medical Center
CMHFPP CMMC-affiliated faculty practice plans (multiple)

ENH: Evanston Northwestern Healthcare
ENHMG: Evanston Northwestern Healthcare Medical Group
RIC: Rehabilitation Institute of Chicago
VA: VA Chicago Healthcare System

THIS PAGE INTENTIONALLY BLANK

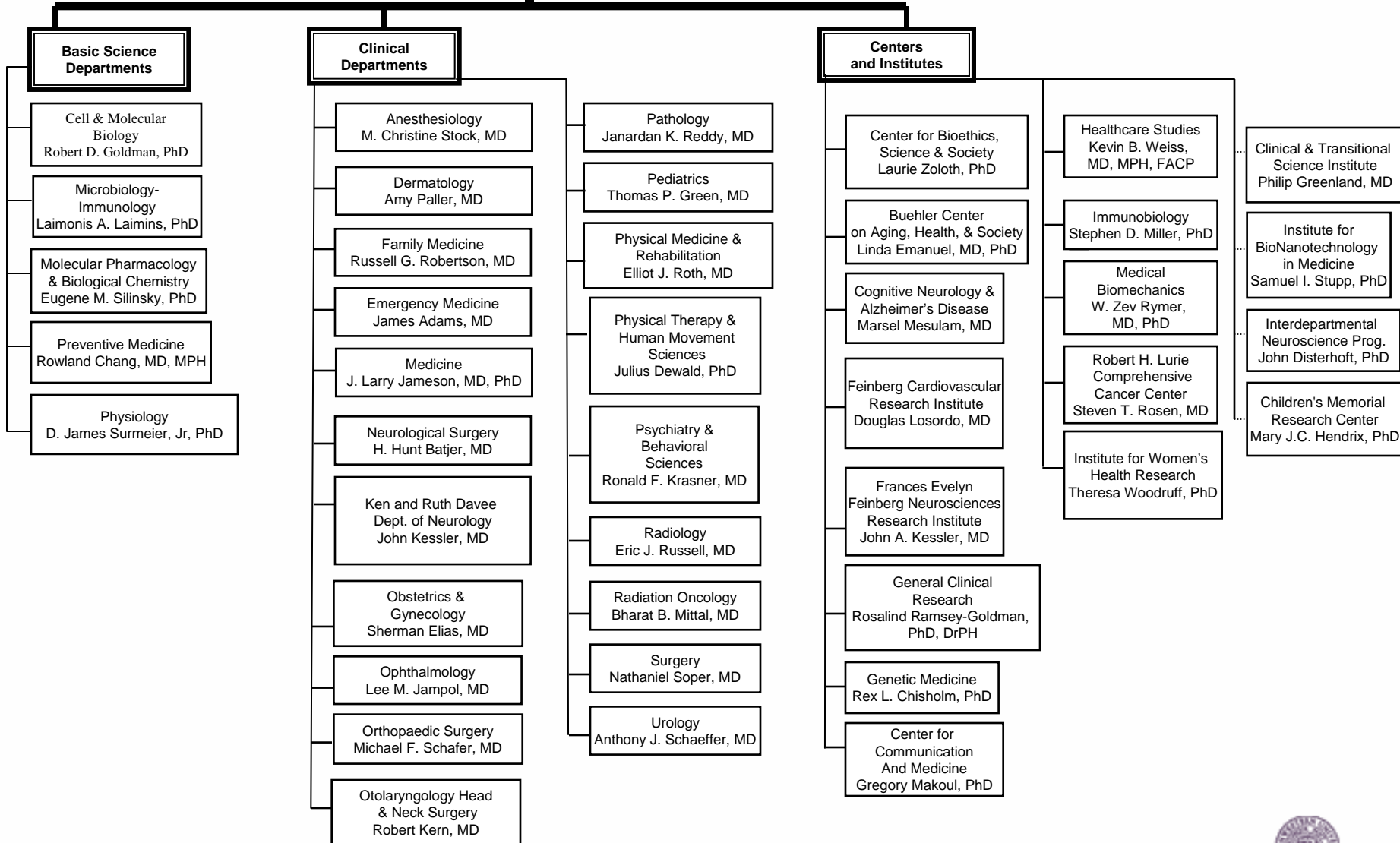


THIS PAGE INTENTIONALLY BLANK



NORTHWESTERN UNIVERSITY FEINBERG SCHOOL OF MEDICINE ORGANIZATION CHART Departments, Centers and Institutes

Dean
Vice President, Medical Affairs



Updated 4-07

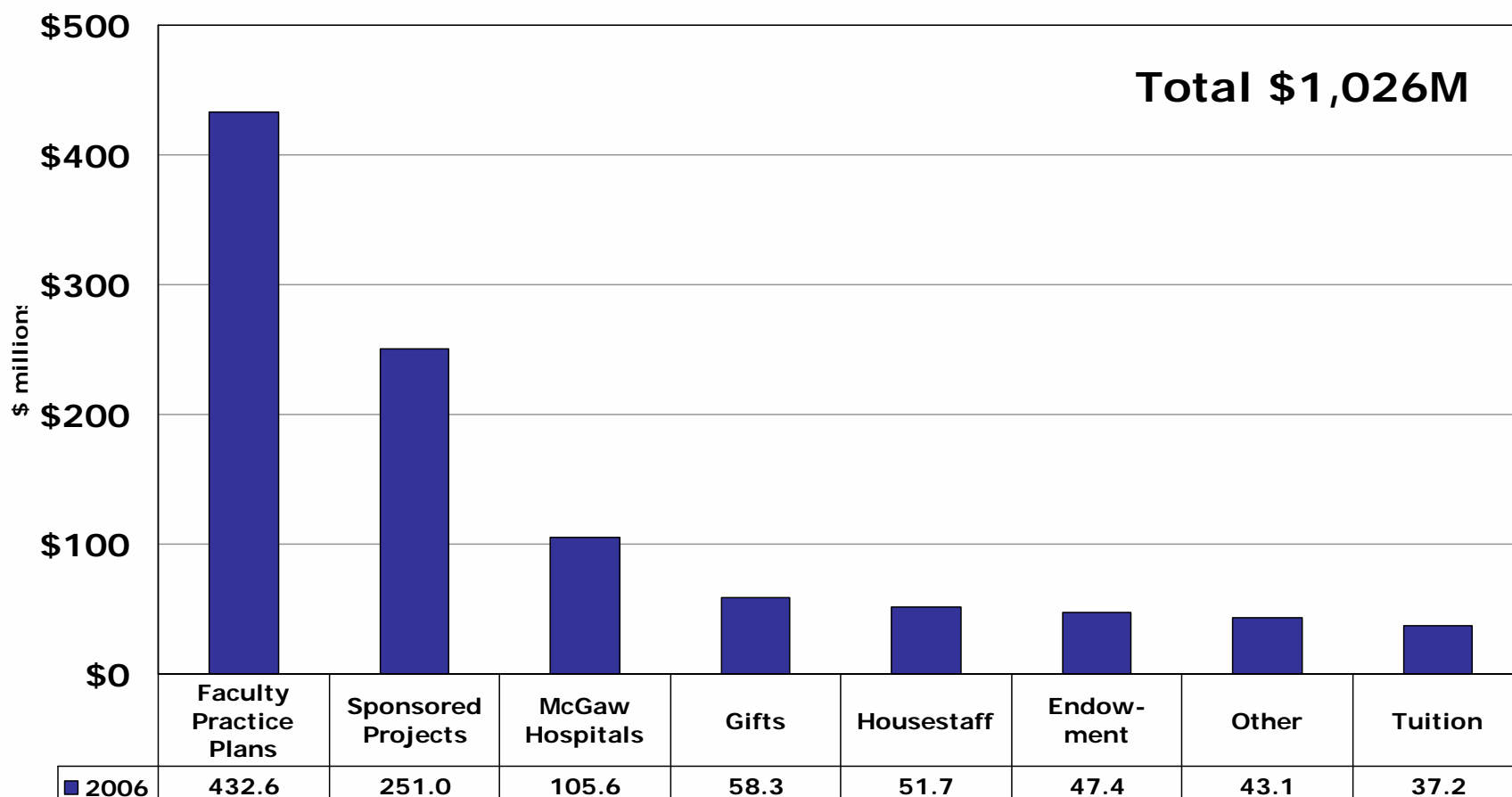
THIS PAGE INTENTIONALLY BLANK



Resources

- **Sources of Support**
- **Growth of Sources of Support**

Resources: FSM sources of support FY2006

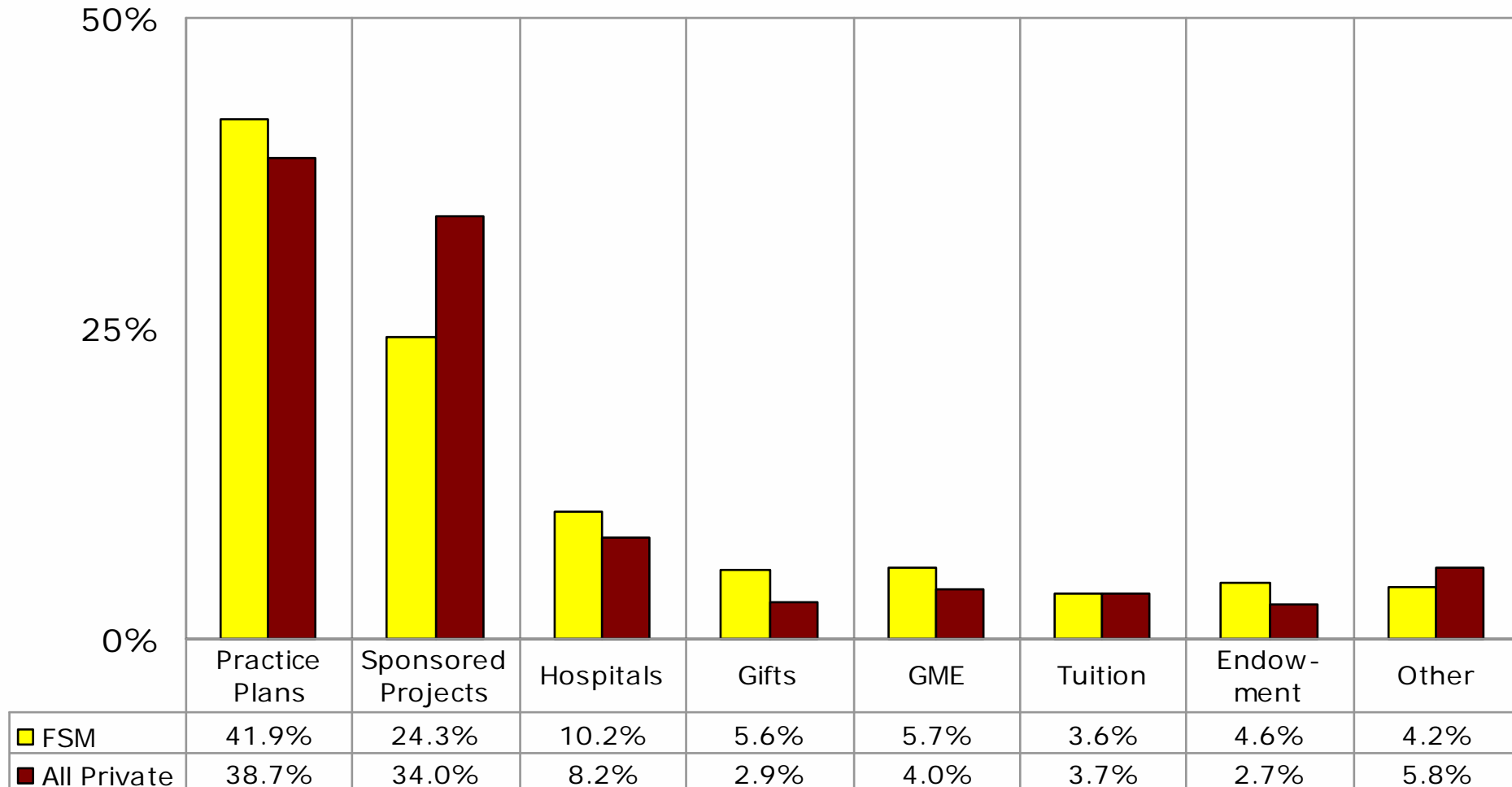


Source: LCME-AAMC. Practice plans are NMFF and PFF
Excludes capital gifts and gifts to endowment



Comparison of sources of support FY2006

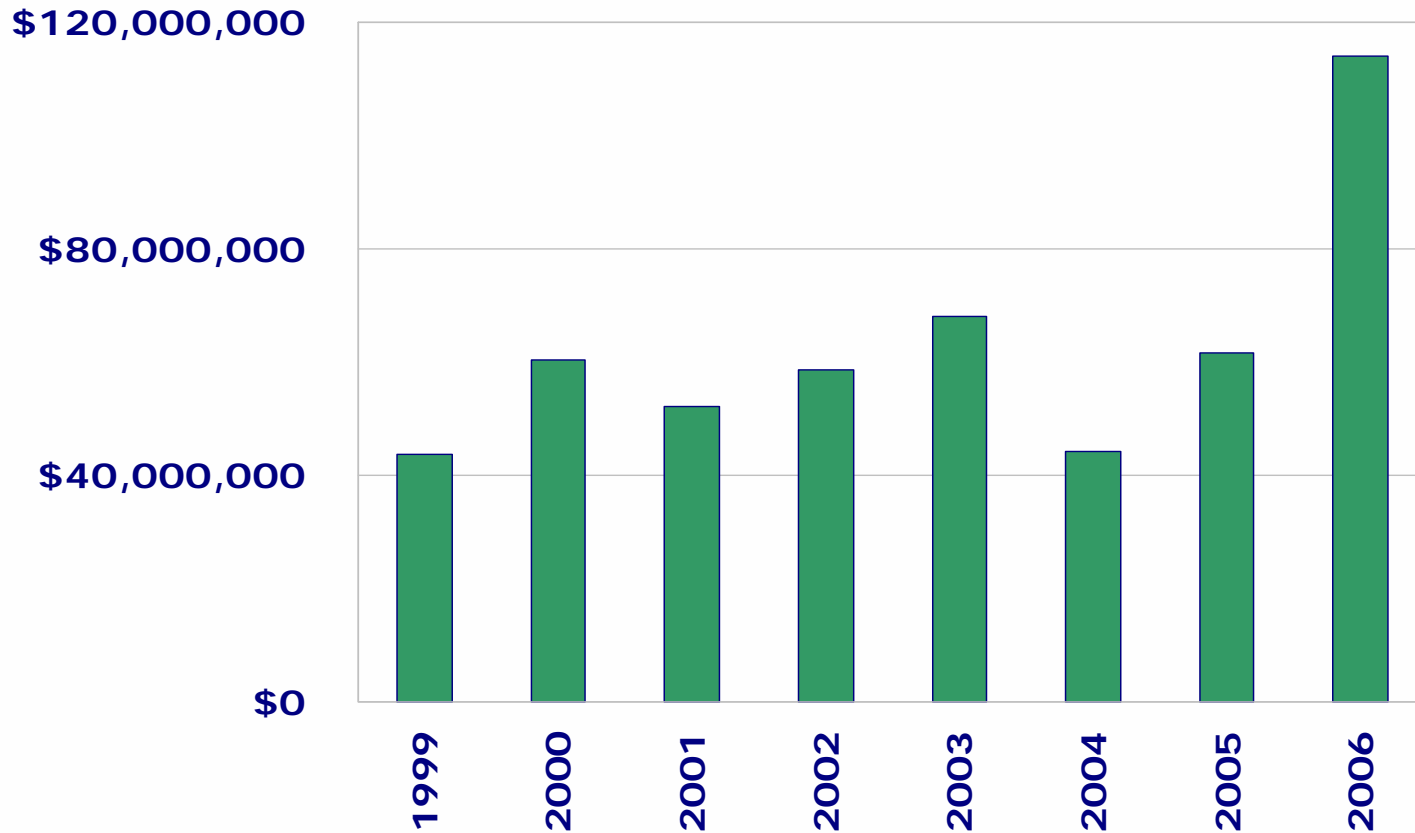
AAMC comparative data from FY2004



* Note: FY2004 is the most recent year for comparative revenue data from the LCME-AAMC.

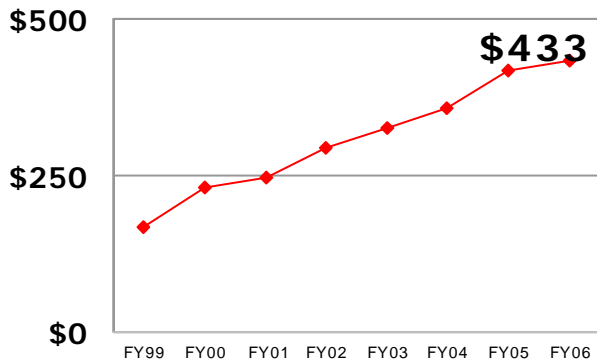
Excludes gifts to endowment, Other category not adjusted to eliminate internal transactions

Total Giving to FSM (cash received)

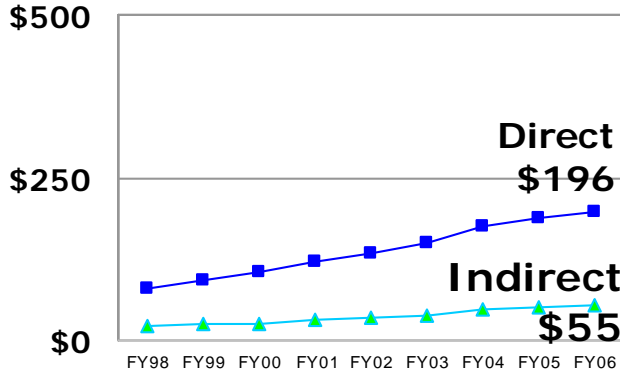


Growth of selected sources of support

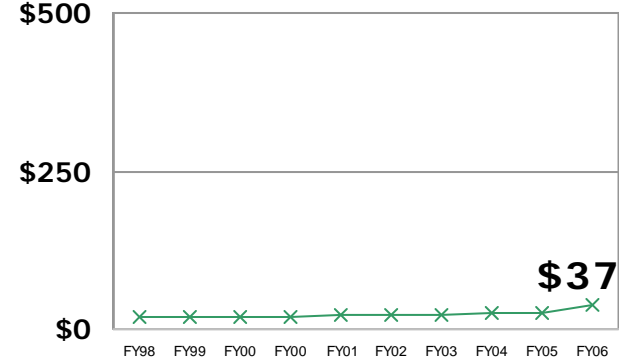
Patient Service (NMFF, PFF)



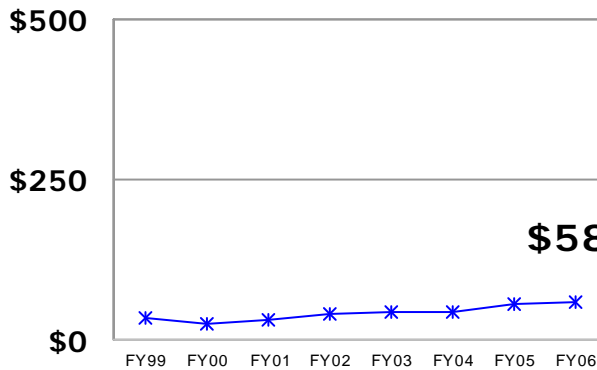
Sponsored Projects



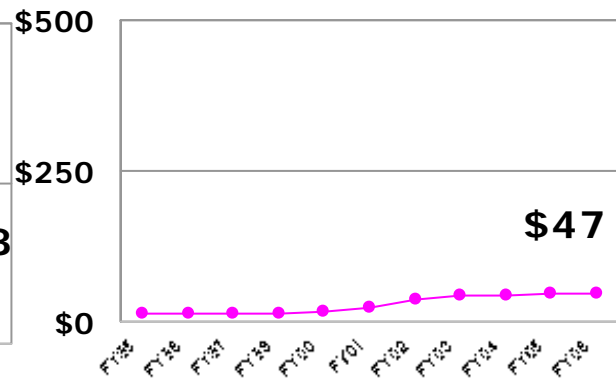
Medical Student Tuition



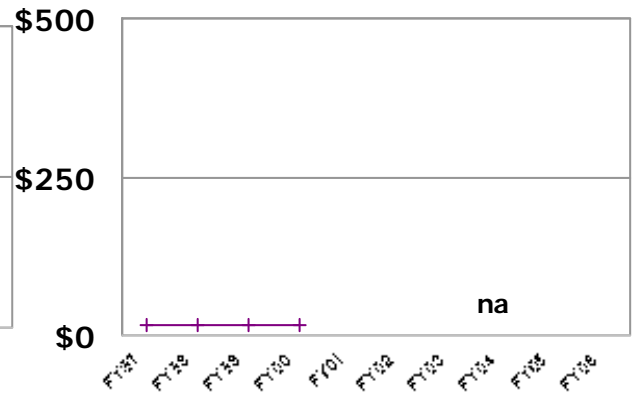
Spendable Gifts



Endowment Spending



NU Appropriation



Academic Programs

Medical and Graduate Education Programs

- **Medical Students**

Regular track

Honors Program in Medical Education (BA-MD)

- **Joint Degree Programs**

MD-PhD (Medical Scientist Training Program)

MD-MPH

PhD-MPH

MD-MM (with Kellogg School of Management)

- **Graduate Research Programs (PhD)**

Integrated Graduate Program in the Life Sciences

Northwestern University Institute for Neuroscience

Northwestern University Biomedical Engineering

Medical and Graduate Education Programs

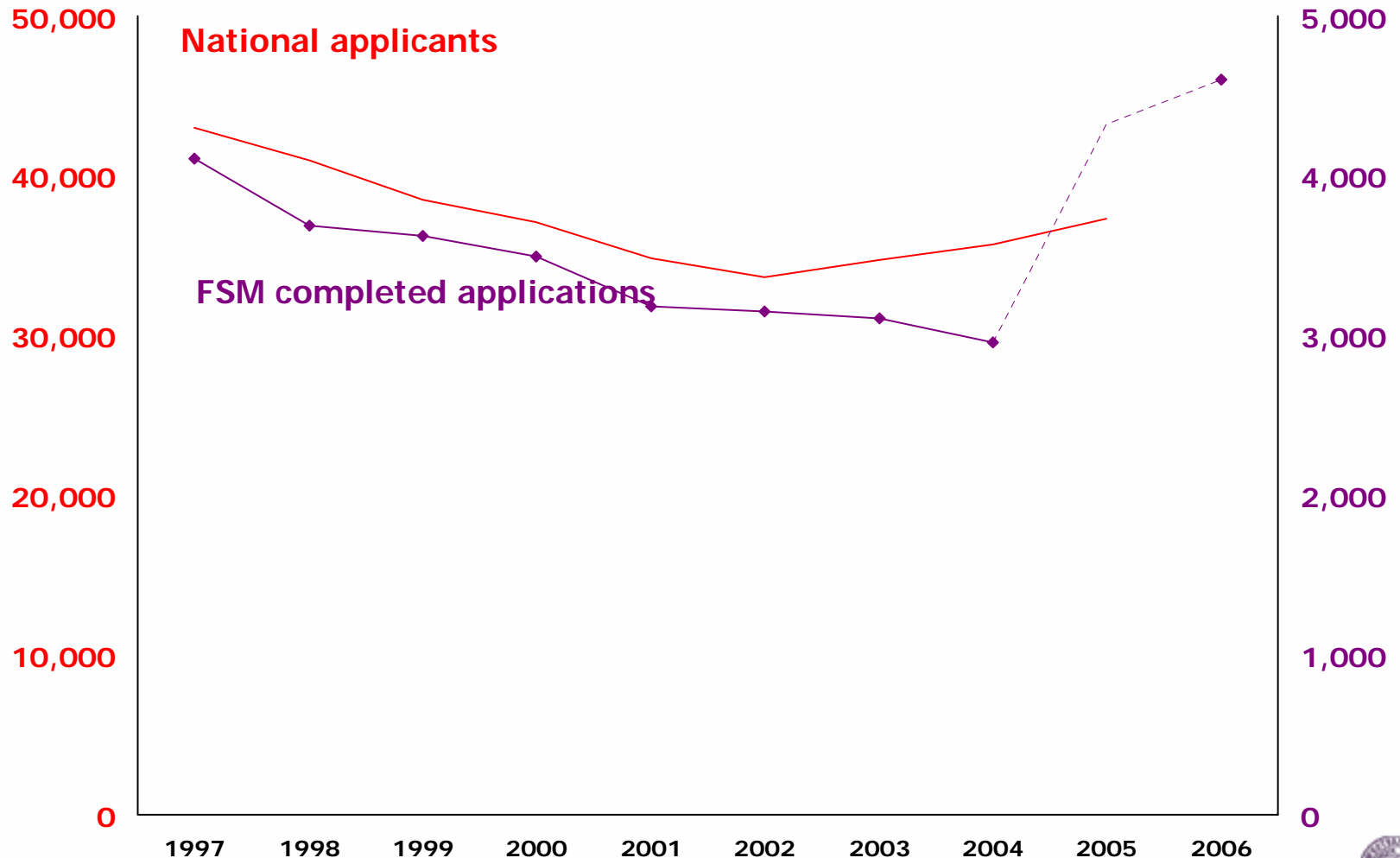
(continued)

- **Residents and Fellows**
 - Integrated McGaw Medical Center GME
 - 69 ACGME Approved Programs
- **Graduate Professional Programs**
 - Clinical Psychology (PhD)
 - Physical Therapy (DPT)
 - Public Health (MPH)
 - Genetic Counseling (MS)
 - Clinical Investigation (MS)
 - Prosthetics and Orthotics (certificate)

Medical Student Profile

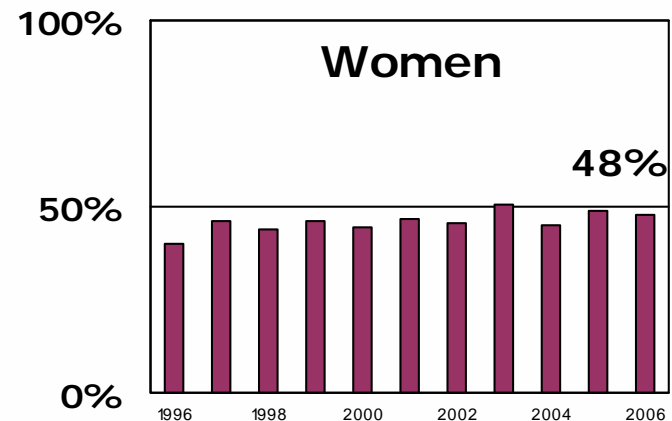
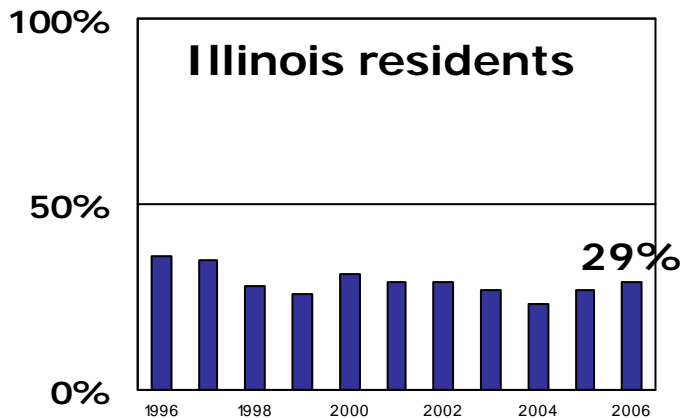
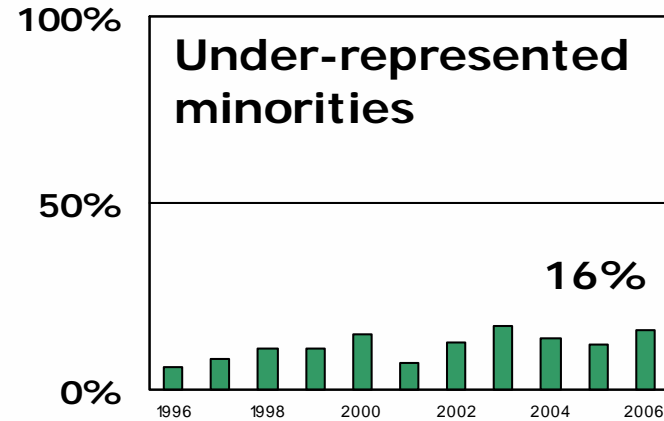
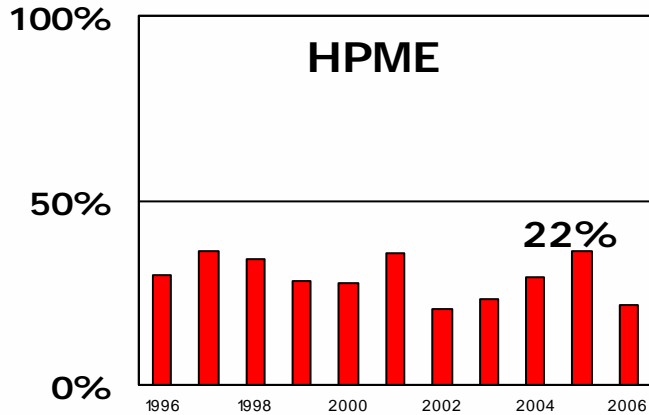
- **Applicants**
- **Matriculants**
- **Student Debt**
- **Student Performance**

Trends in medical student applications



Note: due to problems with the national AMCAS process, 2002 FSM applicant count not available. In 2005, FSM changed its application process, so the spike in applications is not meaningful.

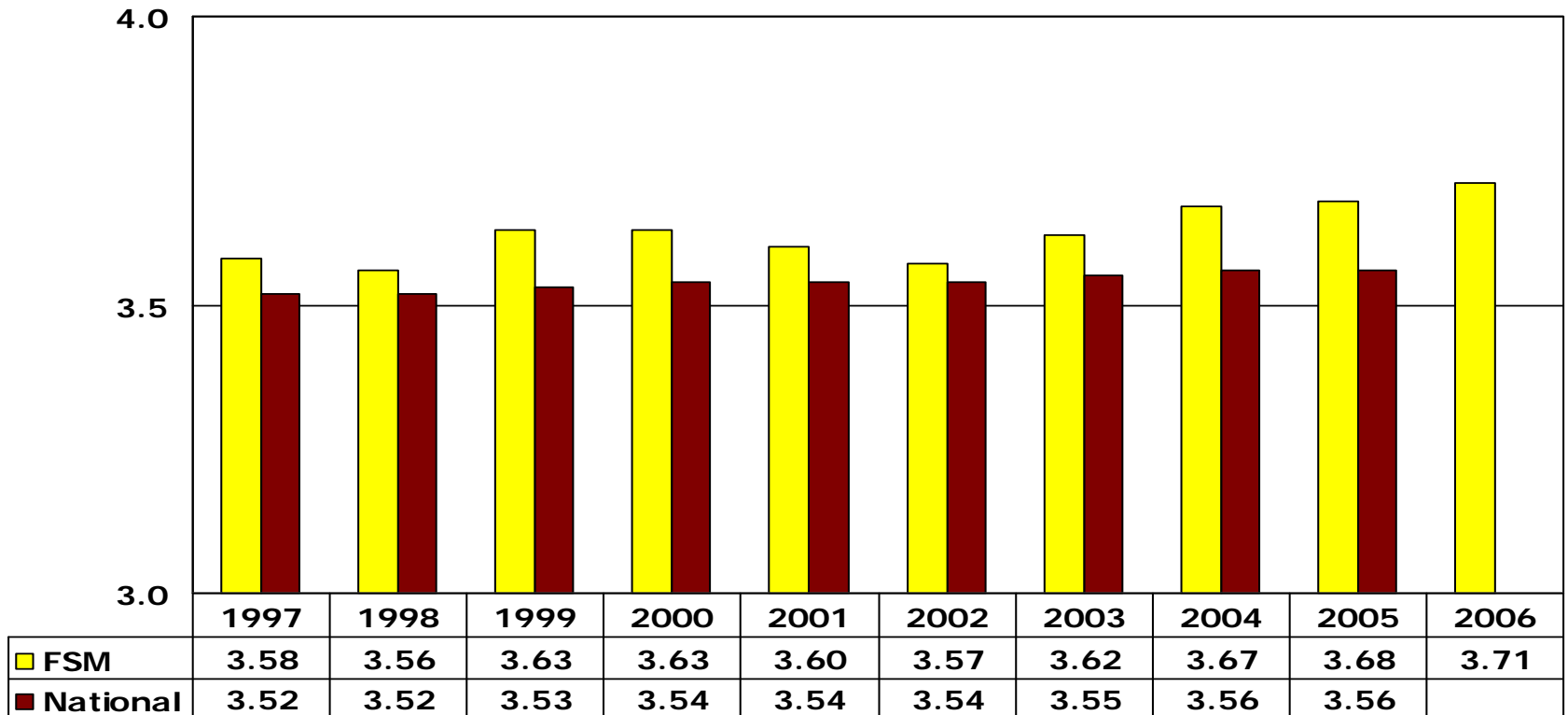
FSM matriculant demographics 2006



Percentages based on 174 matriculants in 2006

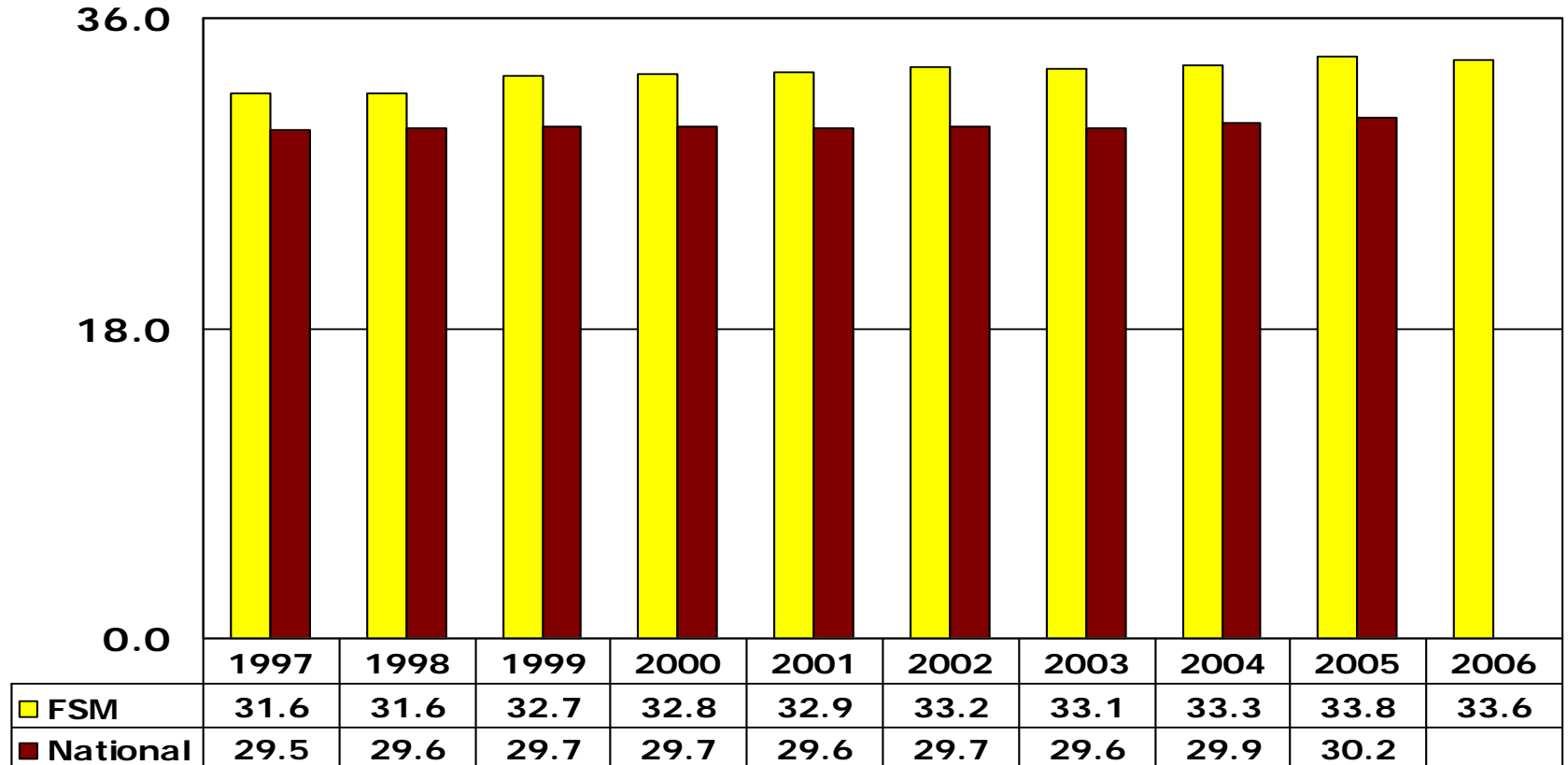


Comparative performance of matriculants: Mean undergraduate science GPA

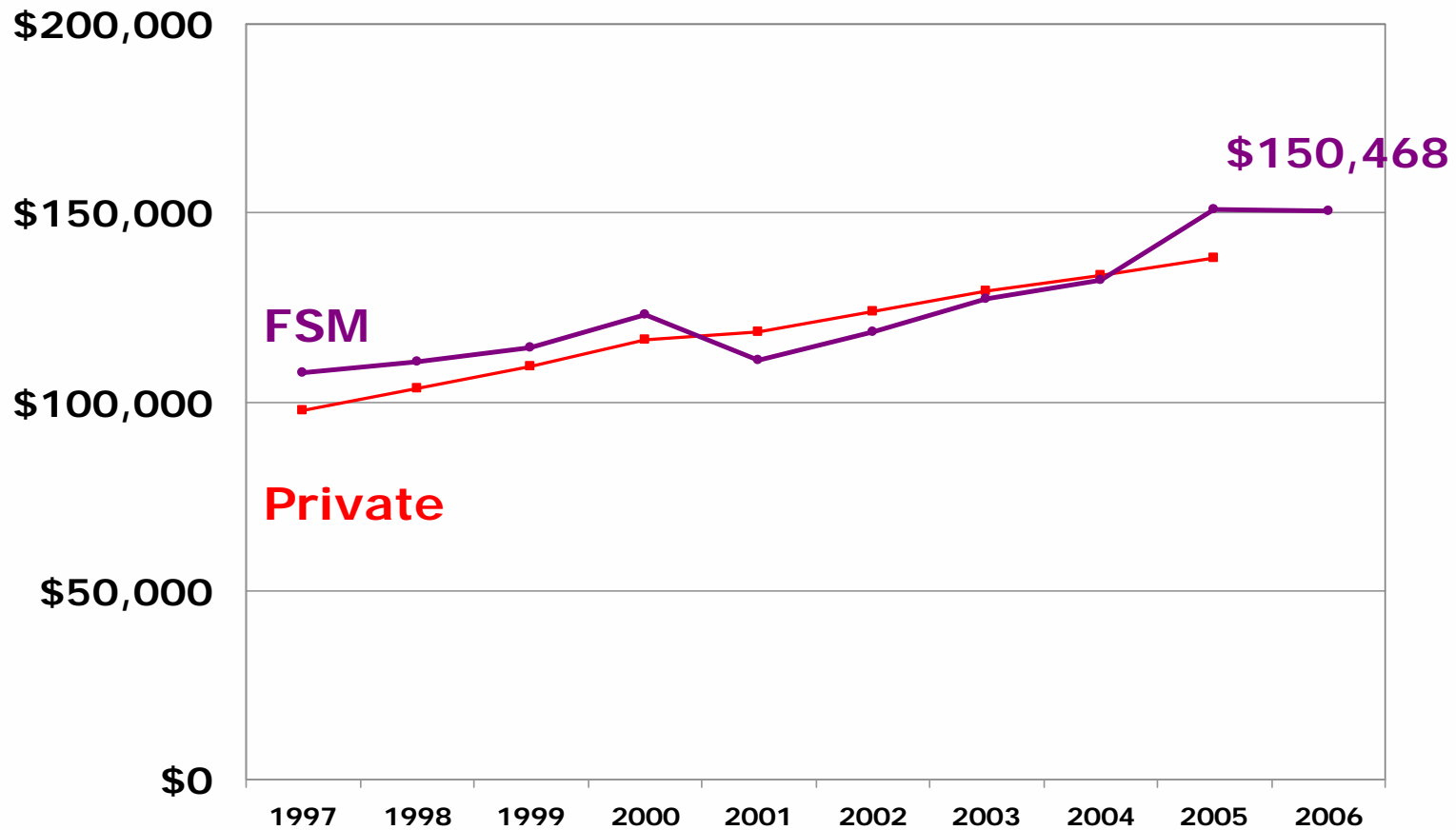


Comparative performance of matriculants: Combined mean MCAT Score

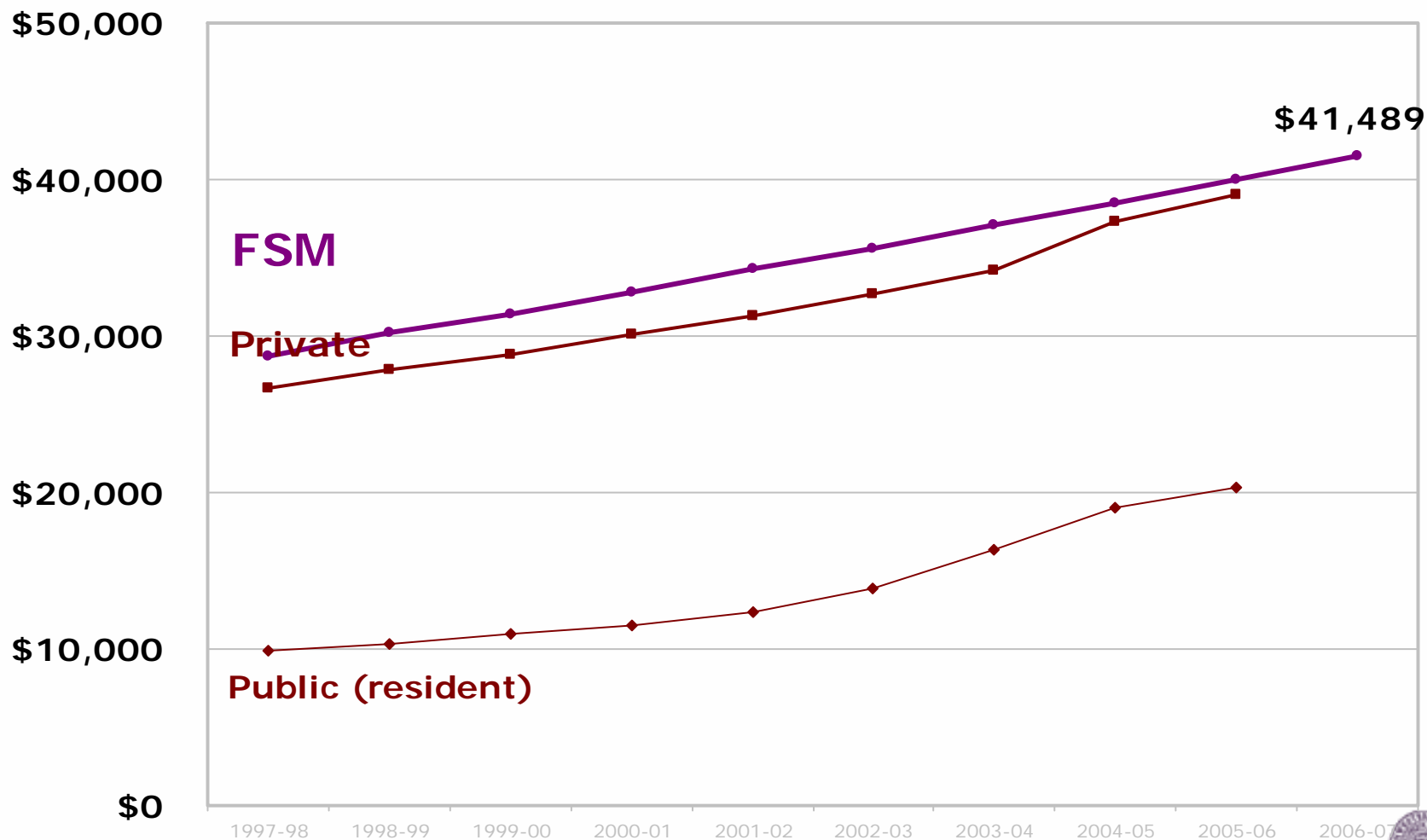
(Biological sciences, physical sciences, verbal reasoning)



Mean Educational Debt of Indebted Medical School Graduates

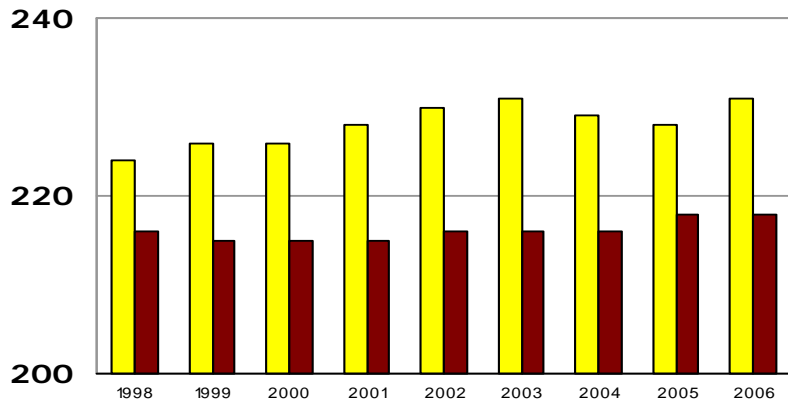


Medical student tuition and fees (median)

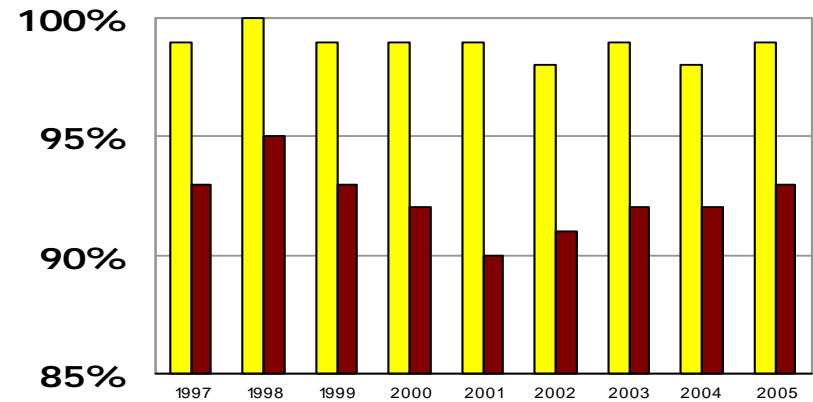


Medical student benchmarks: First-time takers on USMLE Step 1

Mean Score

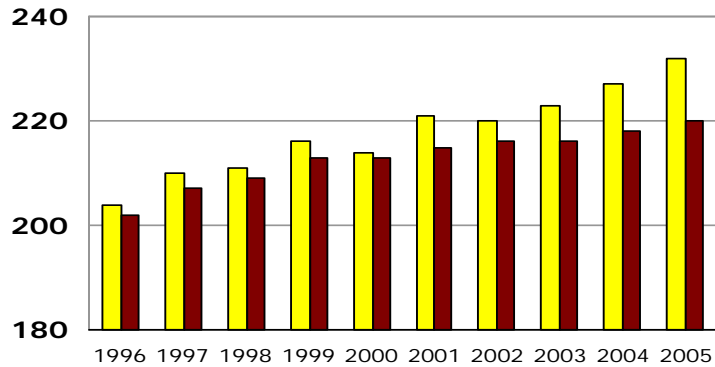


Pass Rate

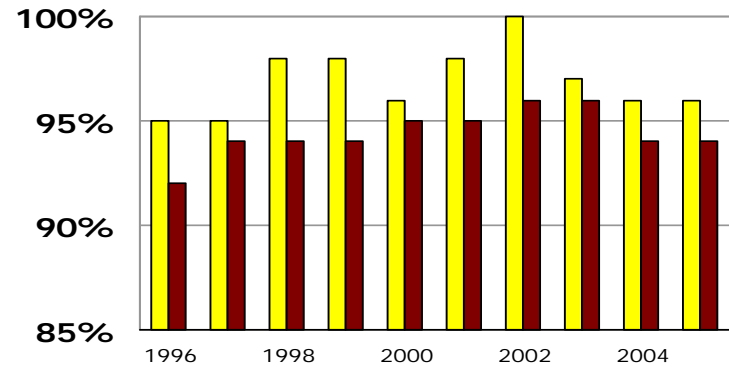


Medical student benchmarks: First-time takers on USMLE Step 2

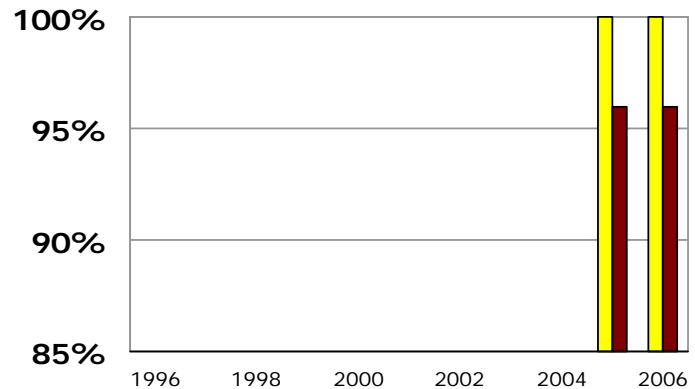
Clinical Knowledge Mean Score



Clinical Knowledge Pass Rate



Clinical Skills Pass Rate



Graduate Medical Education and PhD Training

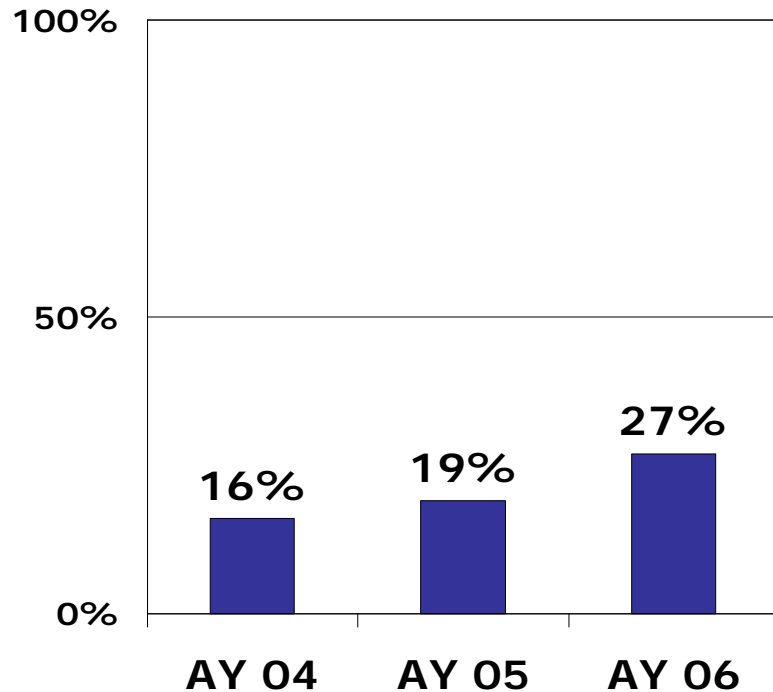
Graduate Medical Education 2006

- **One of the largest GME enterprises in the U.S.**
994 total trainees in 104 programs
- **Residents**
763 in 30 ACGME-approved programs
8 in 3 other programs
- **Fellows**
177 in 39 ACGME-approved programs
54 in 32 other programs

Some quality indicators for resident recruitment

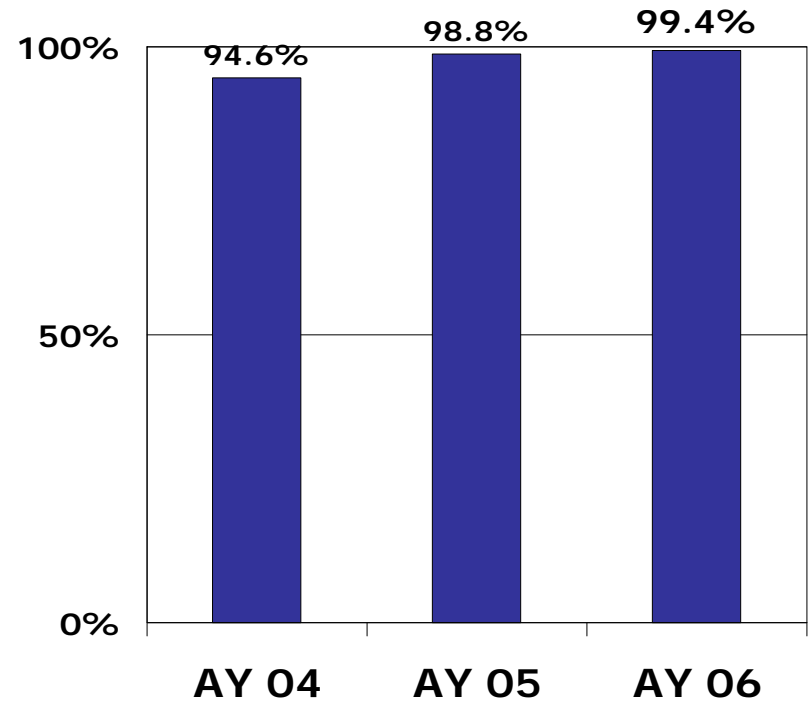
Alpha Omega Alpha (AOA) national medical honor society members

A maximum of 1/6 (17%) of students at US medical schools may be inducted.

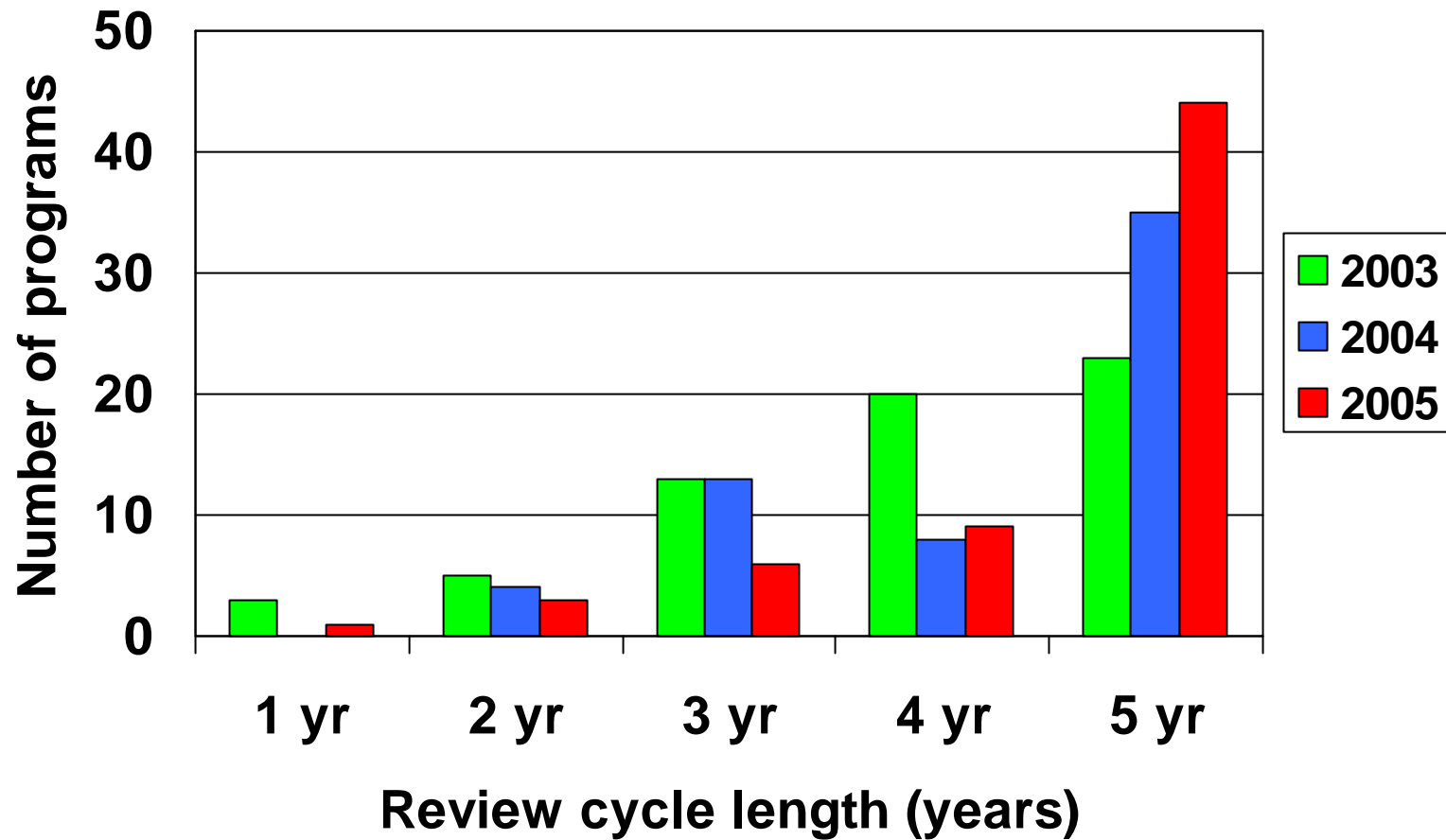


Graduates of U.S. medical schools

Nationwide, about 1/3 (33%) of residency positions are matched to graduates of foreign medical schools.



Graduate Medical Education Accreditation Cycle



Graduate and graduate professional programs

<u>Degree program</u>	<u>Students</u>
• Integrated Graduate Program (PhD)	215
• Medical Scientist Training Program (MD-PhD)	81
• Physical Therapy (DPT)	183
• Clinical Psychology (PhD)	34
• Genetic Counseling (MS)	18
• Public Health (MPH)	25
Also MD-MPH	49
Also PhD-MPH	11
Also JD-MPH	1
• Clinical Investigation Training Program (MSCI)	69
• Prosthetics and Orthotics (certificate)	

Also Neuroscience PhD with NU Institute for Neuroscience, Biomedical Engineering PhD with NU McCormick School of Engineering and Applied Science

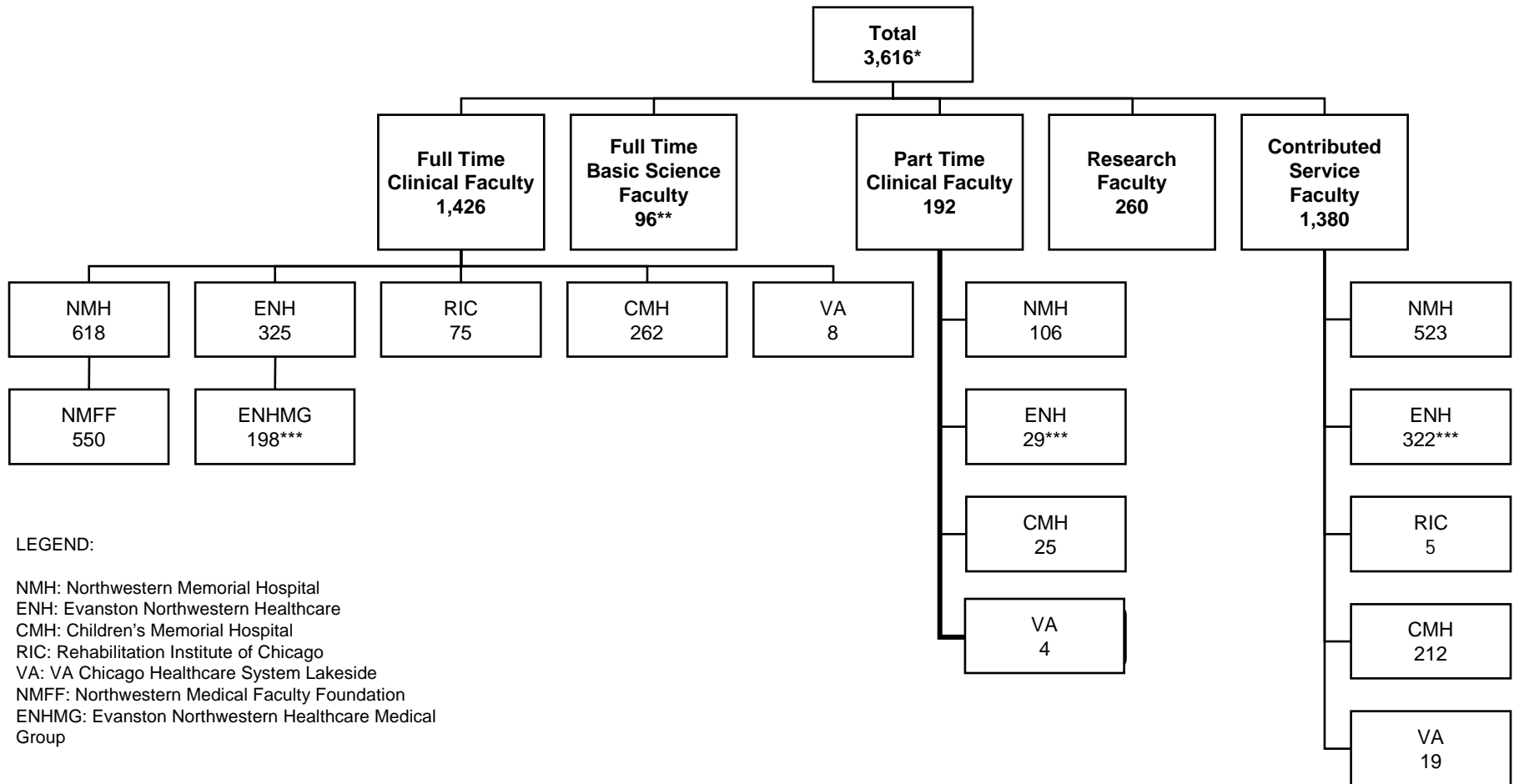
Galter Health Sciences Library

	<i>FY96</i>	<i>FY01</i>	<i>FY06</i>	<i>Nat'l Avg (05)</i>
<i>Prof Staff</i>	15	12	16	12
<i>Total Staff</i>	34	19	30	36
<i>Serial Titles</i>	2,182	2,411	7,171	7,488
<i>Total Vols</i>	291,524	280,242	283,075	236,059
<i>Gate Count</i>	209,312 (est)	482,173	485,848	252,532
<i>Ill Borrow</i>	12,672	10,964	9,017	5,471
<i>Collection \$</i>	\$1,022,675	\$1,003,556	\$1,835,646	\$1,460,469
<i>Recurring \$</i>	\$2,061,850	\$2,379,531	\$3,376,180	\$3,096,921

Faculty

- **Numbers and types**
- **Diversity**
- **Faculty system**

Faculty by appointment type and site (2005)



LEGEND:

NMH: Northwestern Memorial Hospital
 ENH: Evanston Northwestern Healthcare
 CMH: Children's Memorial Hospital
 RIC: Rehabilitation Institute of Chicago
 VA: VA Chicago Healthcare System Lakeside
 NMFF: Northwestern Medical Faculty Foundation
 ENHMG: Evanston Northwestern Healthcare Medical Group

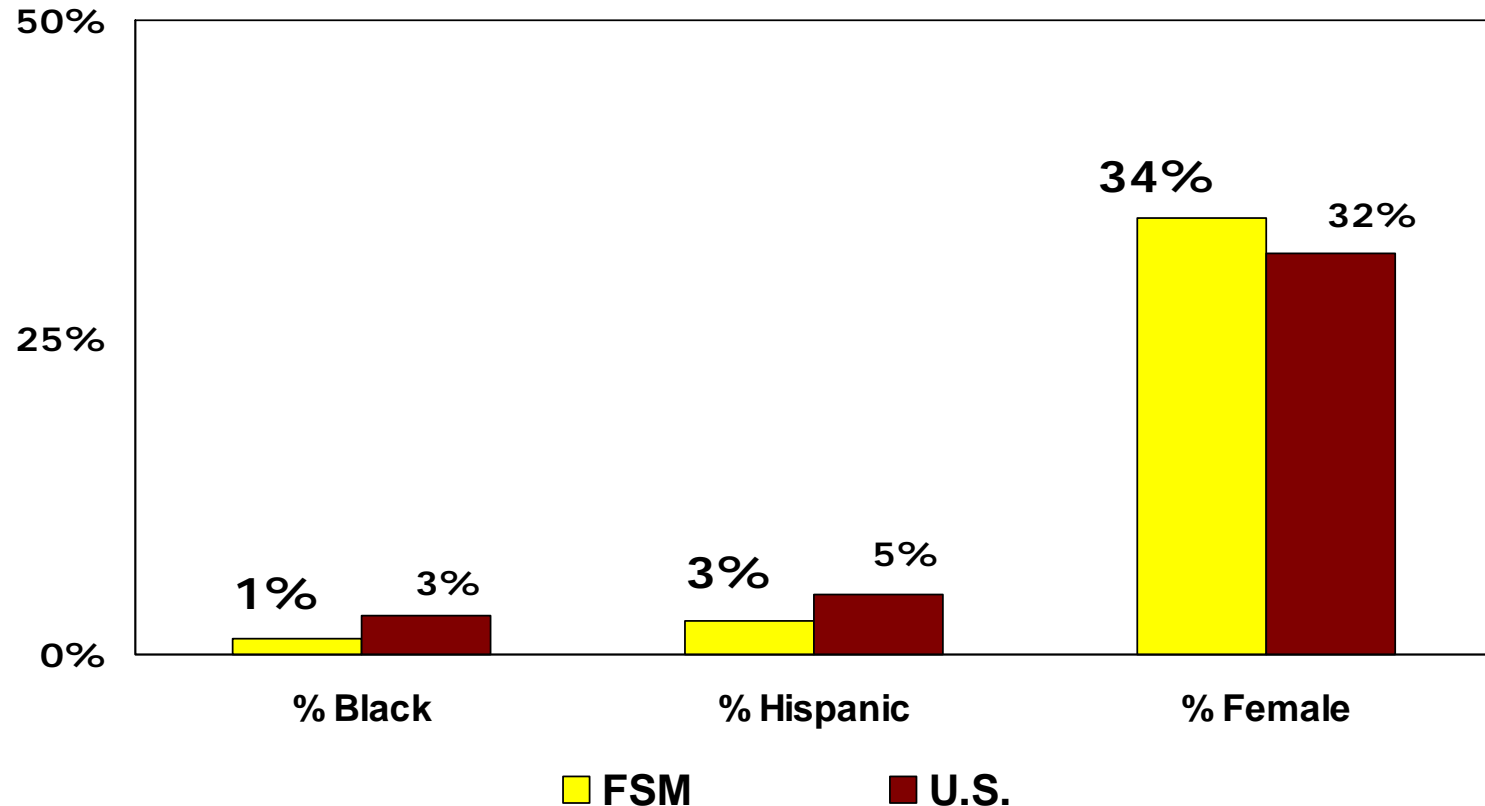
* Due to some faculty practicing at multiple hospitals, the sum of all faculty at NMH, ENH, CMH, RIC and the VA varies from the total number of FSM faculty.

** Pathology is included with the clinical full time faculty

*** ENHMG has a total of 449 members – 198 full time; 115 contributed service; 24 part time; and 112 with no faculty appointment

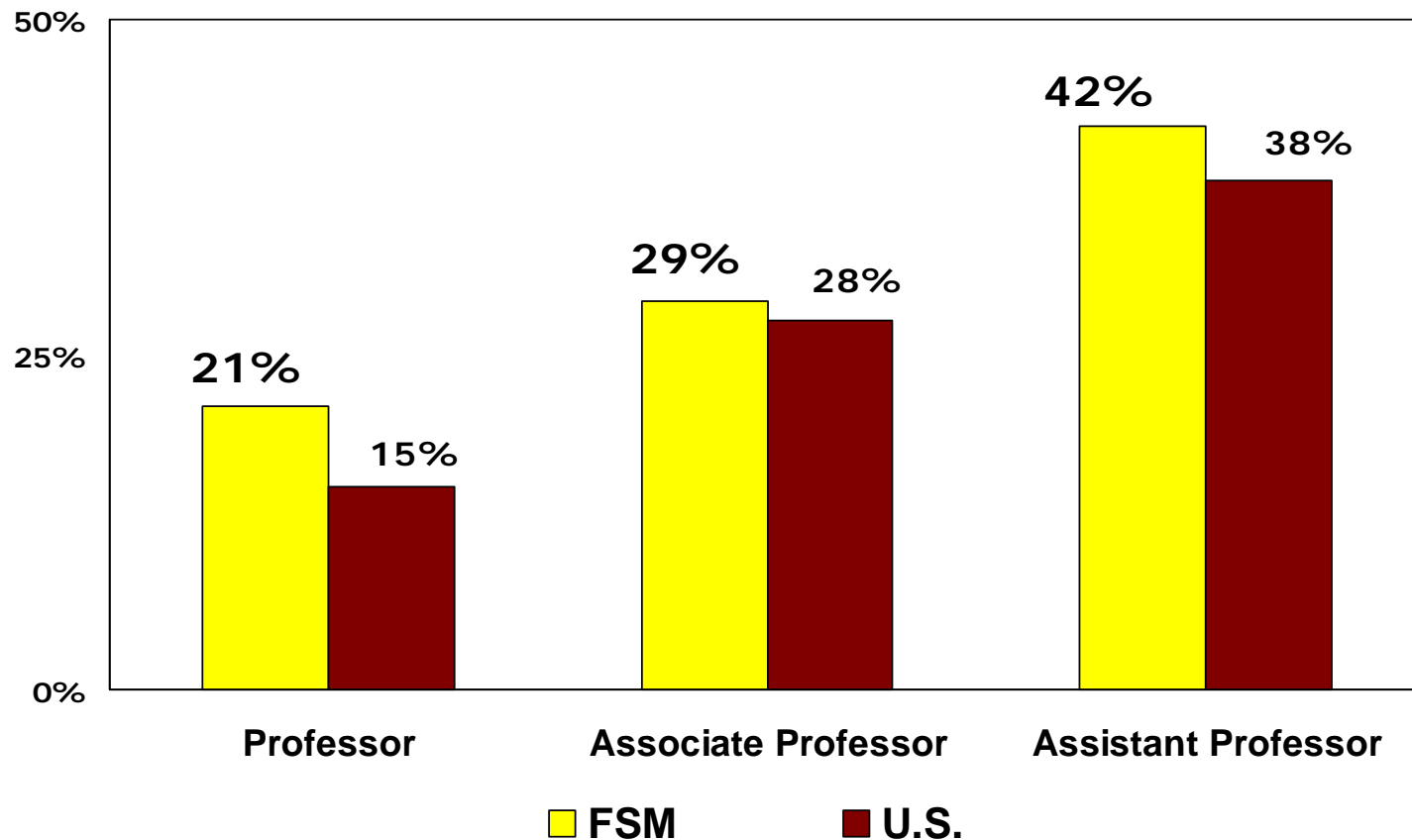
Faculty demographics by ethnicity and gender

Full-time Medical School Faculty
Professorial Ranks



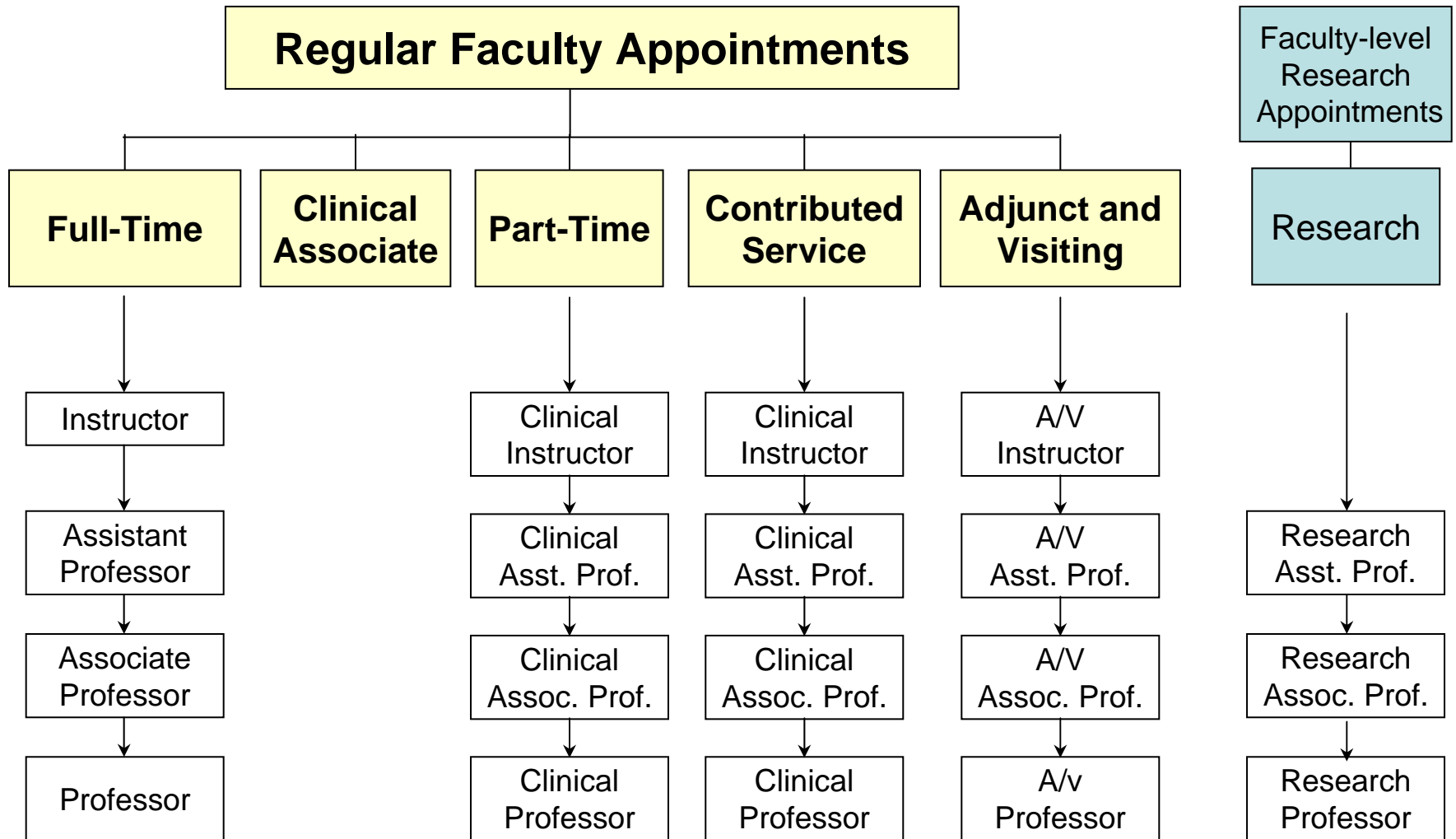
Faculty demographics by gender and rank

Percentage of Female, Full-time, Medical School Faculty, Professorial Ranks Only

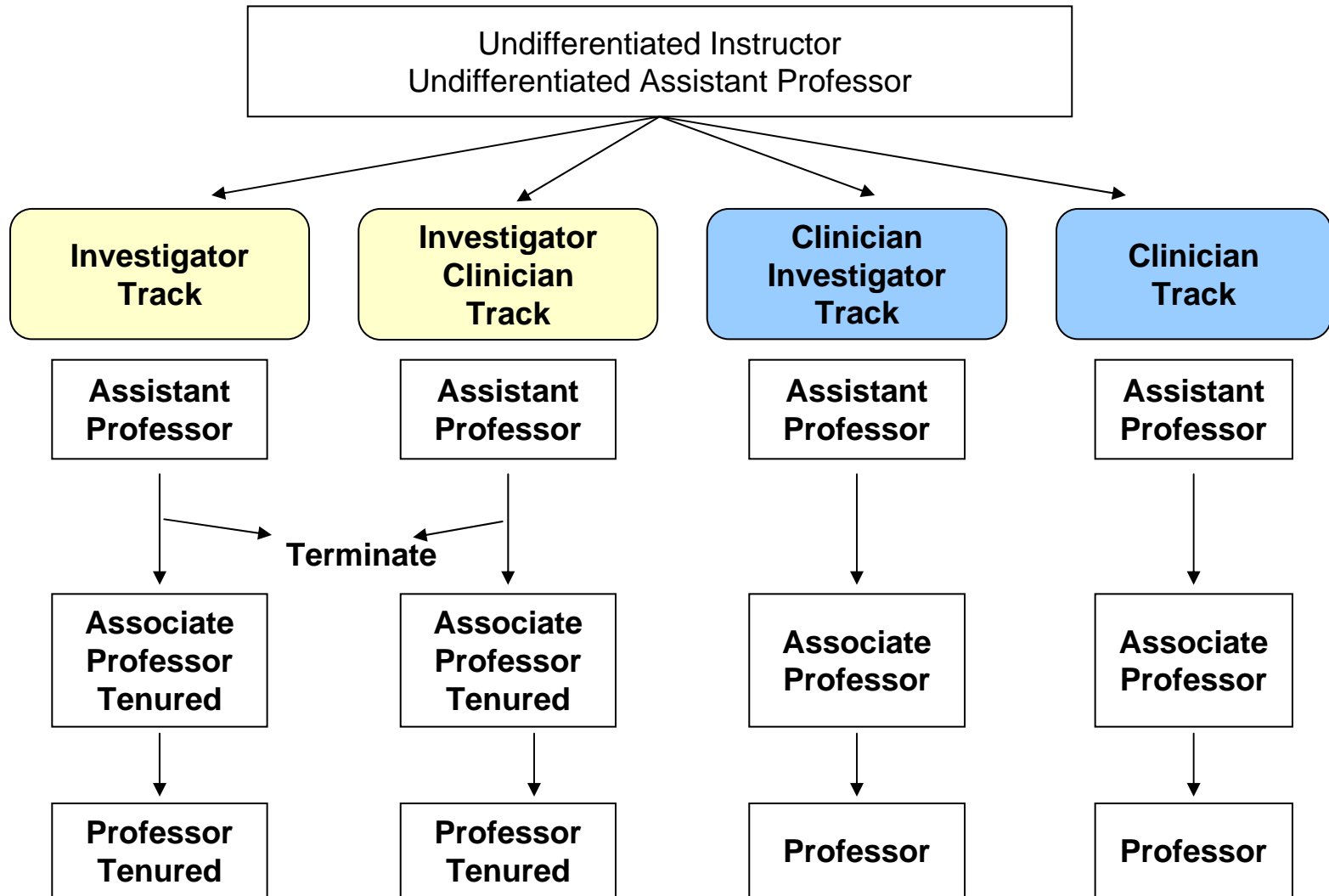


FSM Faculty System

Appointment Categories and Ranks



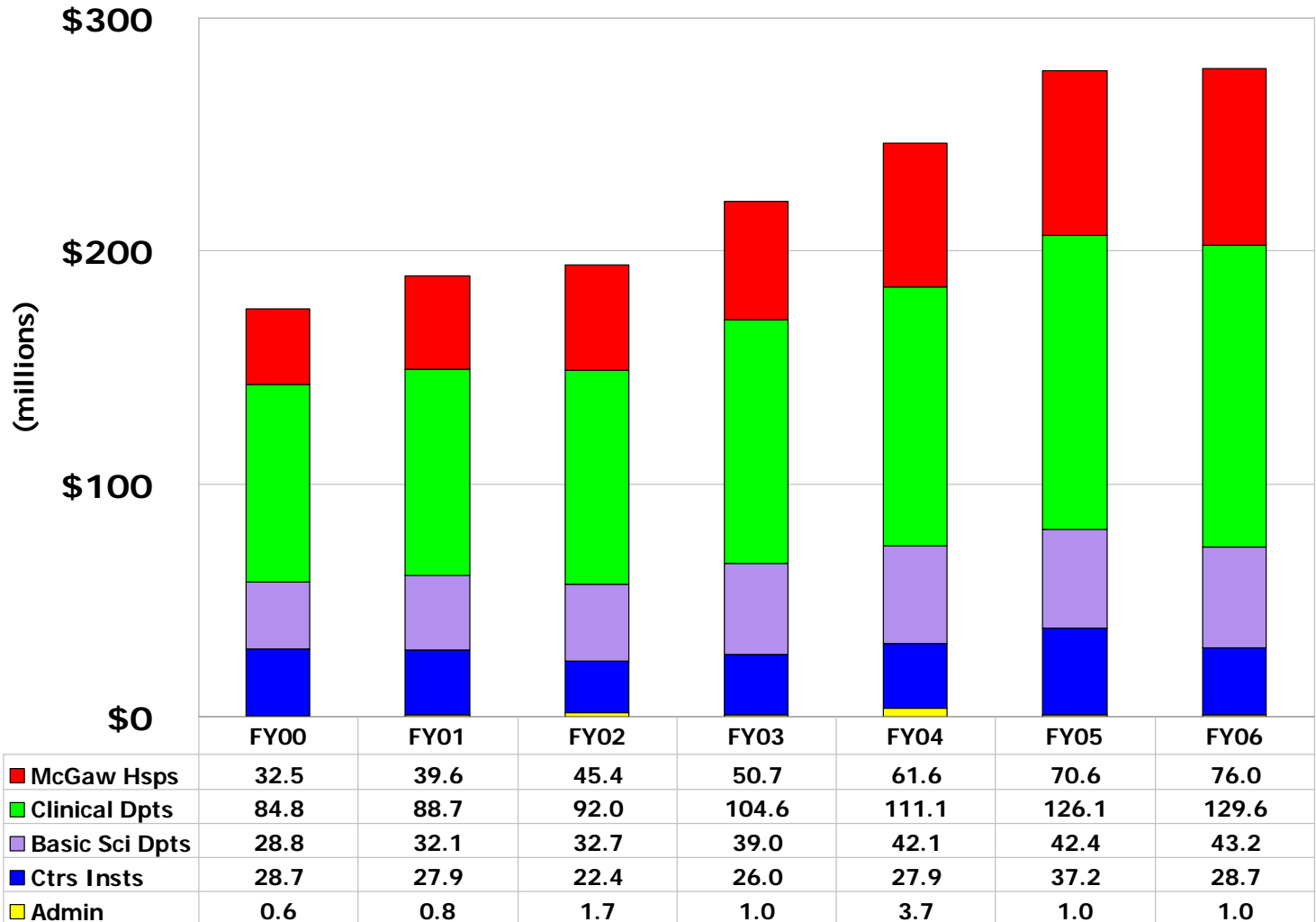
FSM Faculty System: Career Tracks



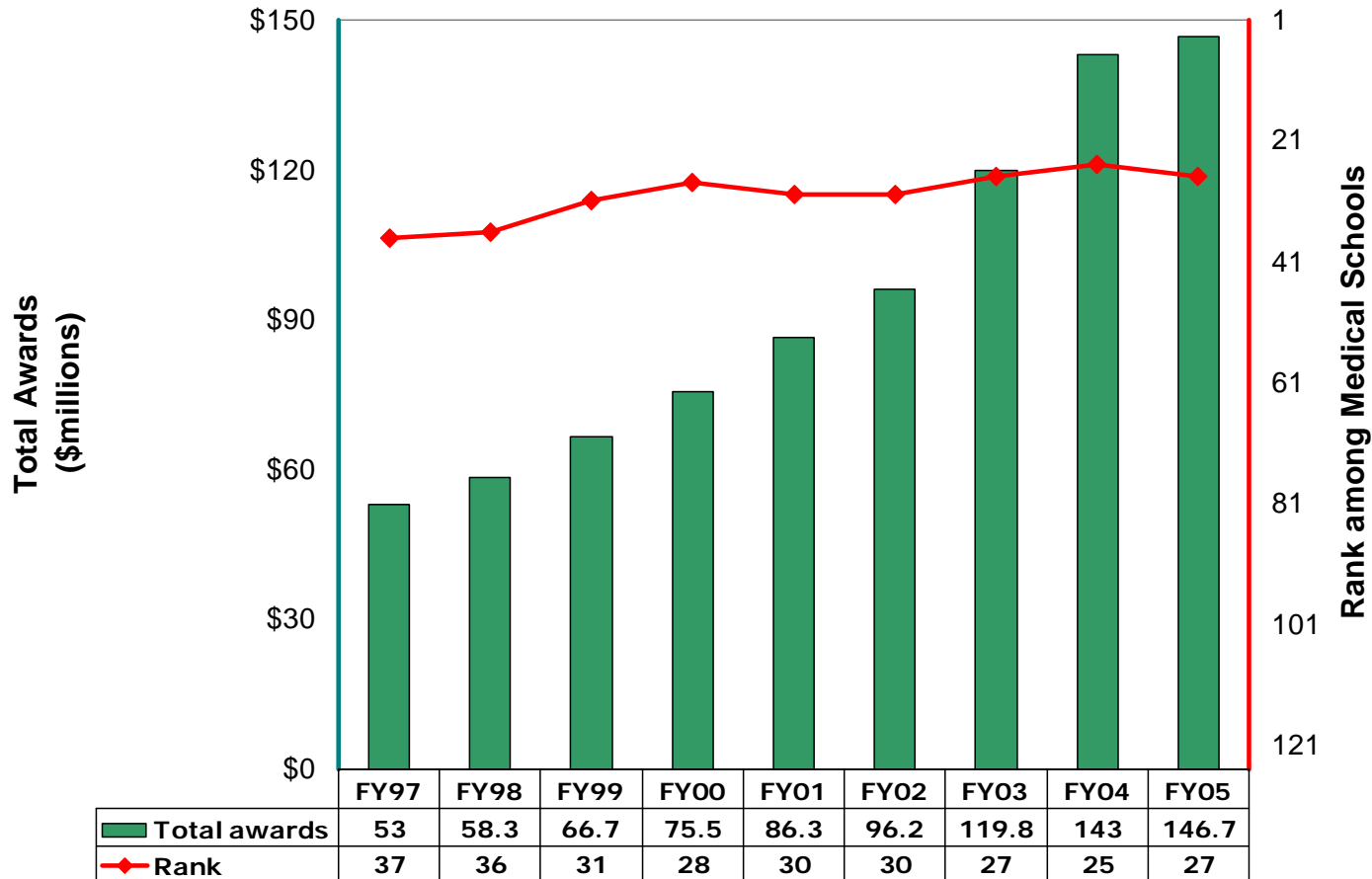
Research Resources

- **Sponsored Project Support**
- **Special Awards**
- **Space**

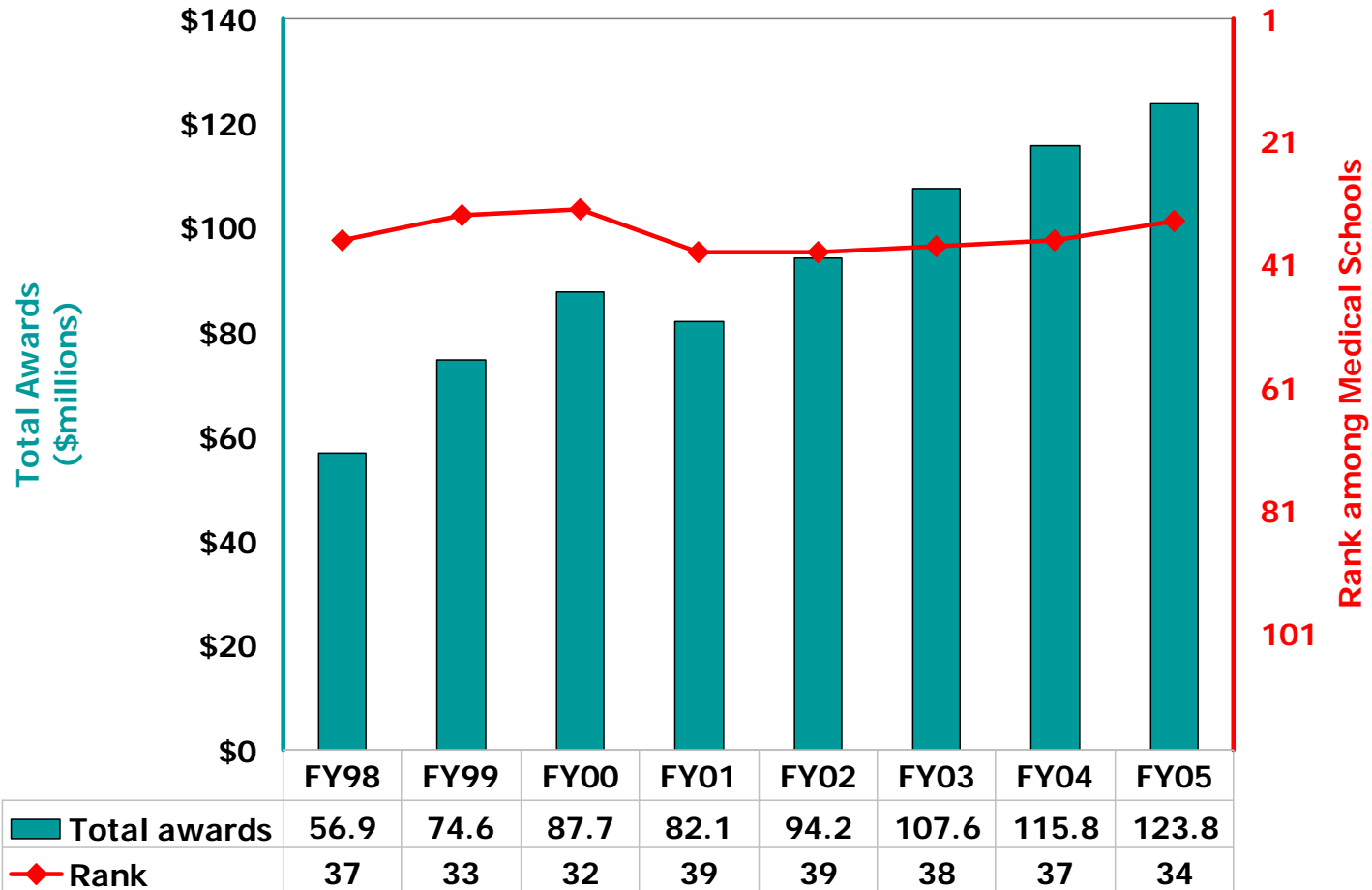
Sponsored Project Awards



Federal research direct costs and ranking Academic medical center-wide



NIH Awards and Rankings (excludes McGaw hospitals)



Department NIH Rankings FY2005

Ranked 1-25 (8)

Urology (3)

Physical Medicine & Rehab (4)

CM Biology (7)

Physiology (10)

Preventive Medicine (17)

Neurology (20)

Medicine (21)

Pathology (24)

Ranked 26-50 (9)

Microbiology-Immunology (26)

Dermatology (27)

Obstetrics/Gynecology (30)

Otolaryngology (30)

Radiology (31)

Anesthesiology (35)

Ophthalmology (44)

MPBC (48)

Surgery (48)

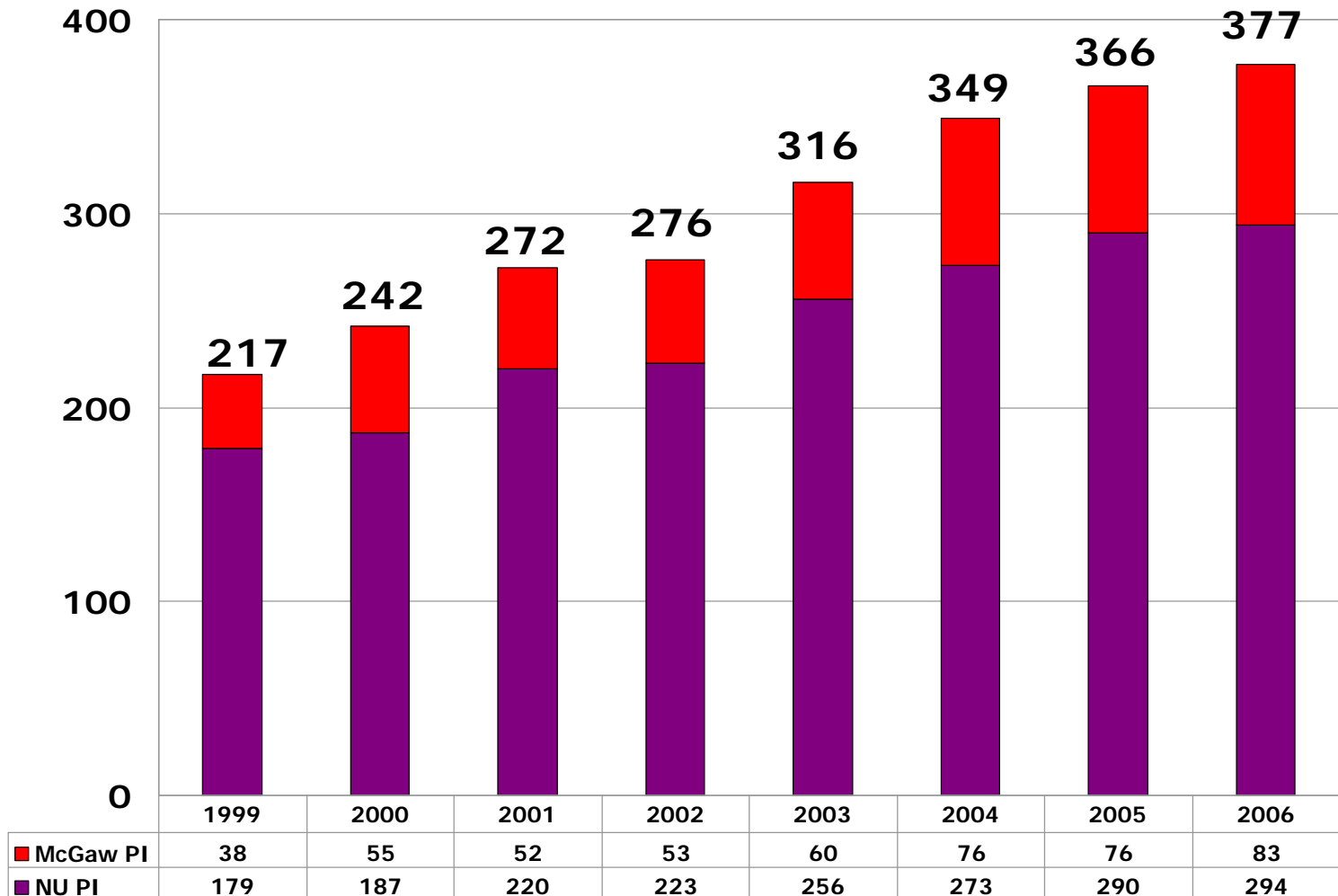
Ranked by research sponsored at affiliated specialty hospitals

Rehabilitation Institute (1)

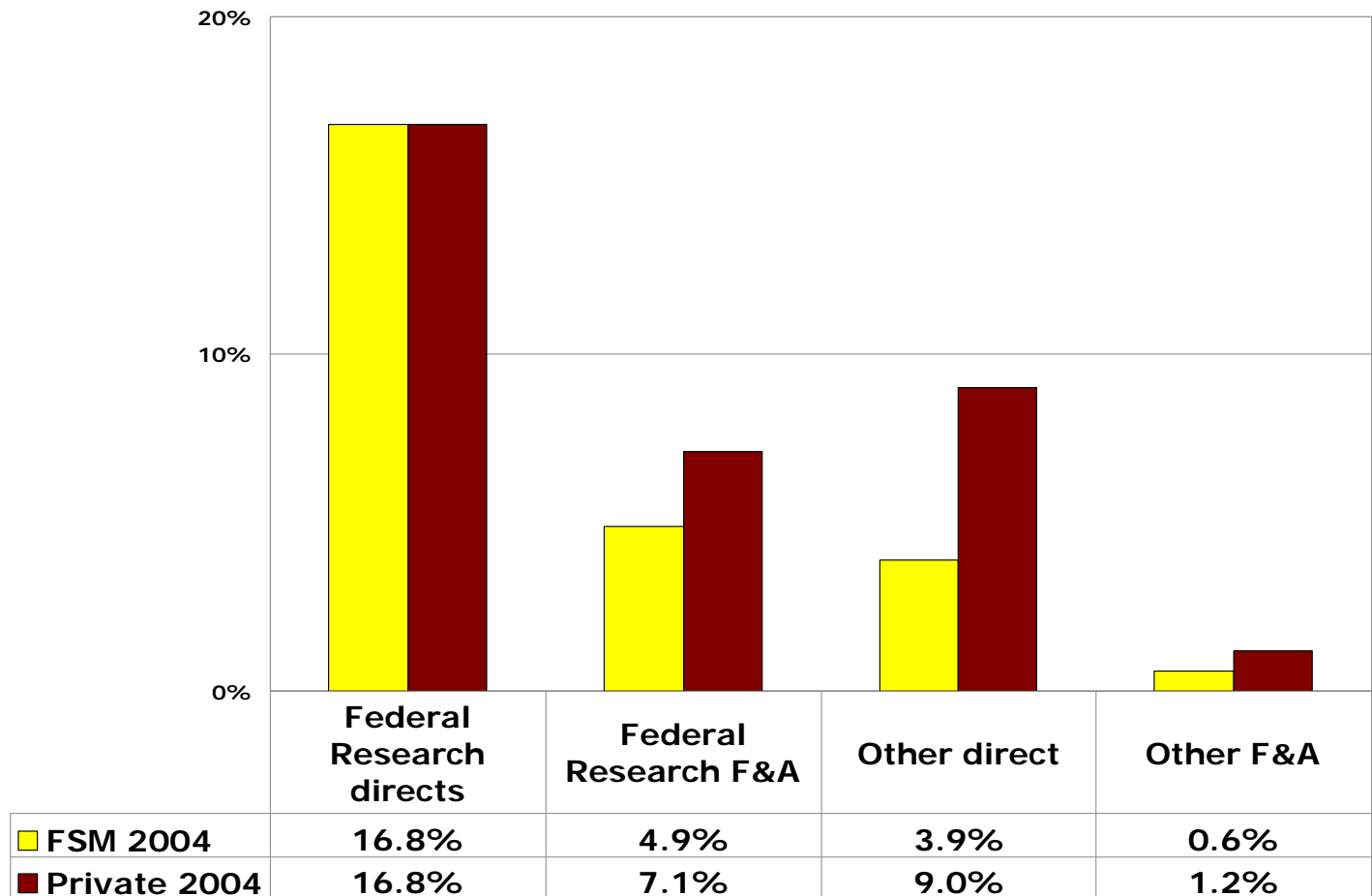
Children's Memorial Hospital (9)

Evanston Northwestern Healthcare (20)

NIH Principal Investigators



Grant and contracts as a percent of revenues FY2004

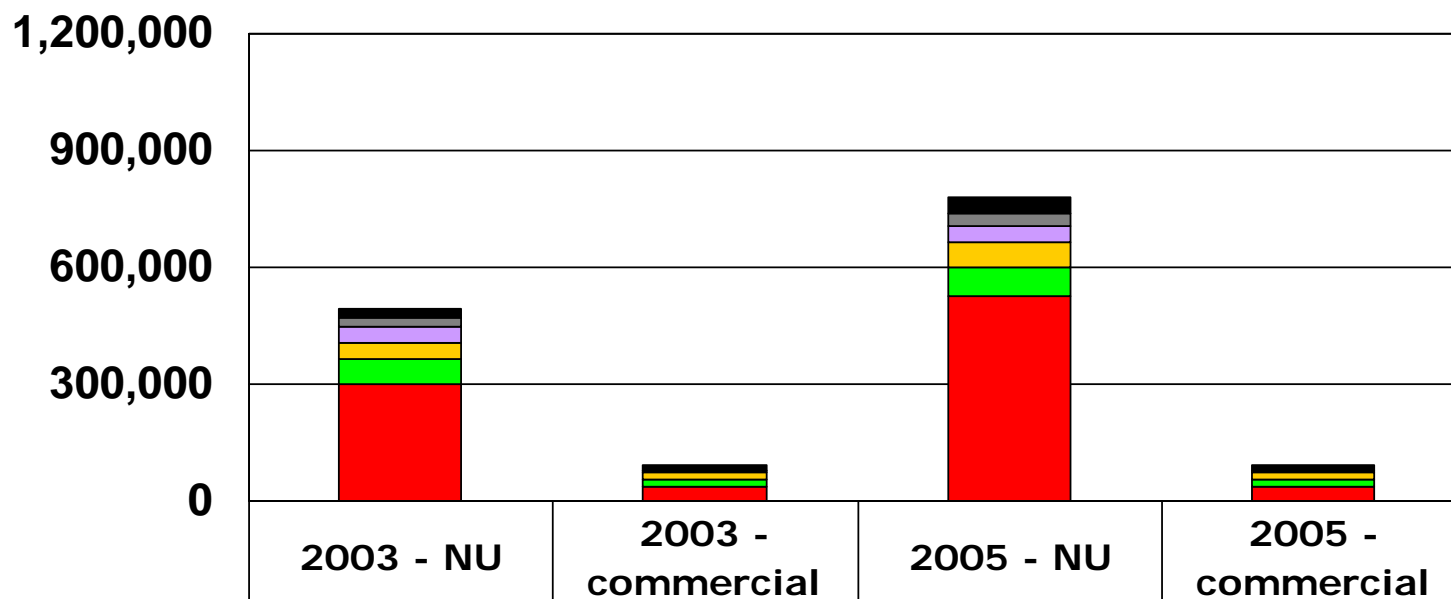


* FY2004 is the most recent year comparative revenue data is available from the LCME-AAMC.

NIH Program Development Awards

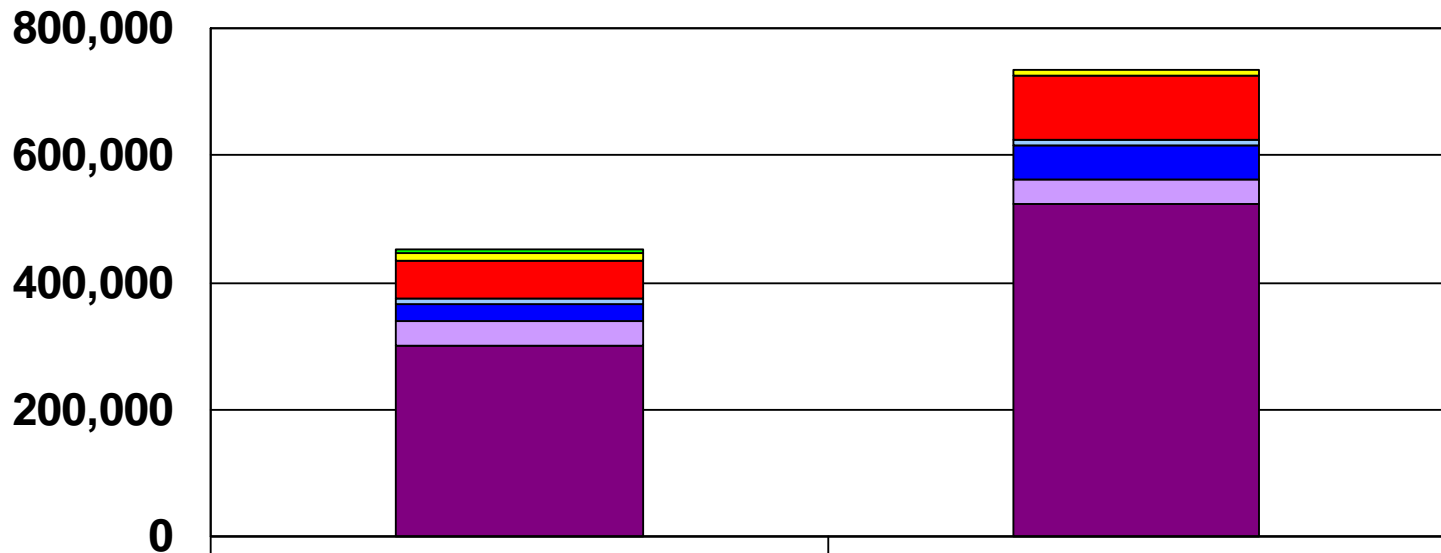
	2001	2002	2003	2004	2005	2006
Program project and center grants						
Projects	21	26	29	31	31	37
Annualized awards (\$M)	\$22.4	\$26.9	\$34.2	\$31.8	\$45.0	\$36.0
NIH training grants						
Projects	27	31	34	40	47	53
Annualized awards	\$2.9	\$6.2	\$5.8	\$6.4	\$6.5	\$5.9
NIH K-series awards						
Projects	22	23	24	31	39	35
FSM PI	22	23	23	27	37	34
Annualized awards	\$3.2	\$2.8	\$4.6	\$3.6	\$7.1	\$7.4
NIH MERIT awards						
FSM PI	10	9	11	10	10	9
Annualized awards	\$2.9	\$2.9	\$3.8	\$3.5	\$3.6	\$2.9

FSM academic space



■ Vacant	23,145	14,752	38,545	14,752
■ Other	22,208	3,596	33,824	3,596
■ Library	39,992	0	39,992	0
■ Instruction	40,088	20,682	66,493	20,682
■ Administration	64,518	18,308	75,957	18,308
■ Research	301,736	36,870	524,405	36,870

Research space for FSM faculty



	2003	2005
■ VA	8,000	0
■ RIC	10,000	10,000
■ ENH	60,000	100,000
■ CMIER-lease	9,000	9,000
■ CMIER	27,000	54,000
■ NU-lease	38,000	38,000
■ NU	301,000	524,000

Comparative data and rankings

Comparative rankings 2005-2006

Basic science departments

	Percentile rank compared to	
	All Schools	Private Schools
Full-time faculty	60	80
Medical students	75	90
Graduate students	55	80
Research grant spending	75	85
Endowment spending	80	90
Research grant spending per faculty	80	90

Source: American Association of Medical Colleges (AAMC)

Comparative rankings 2005-2006

Clinical departments

	Percentile rank compared to	
	All Schools	Private Schools
Full-time faculty (06)	85	90
Medical students (06)	70	85
Residents (06)	80	90
Research grant spending (05)	80	85
Endowment spending (05)	90	90
Research grant spending per faculty (05)	65	80

Source: American Association of Medical Colleges (AAMC)

Hospital and Clinical Service Rankings U.S. News and World Report 2006

Rehabilitation Institute of Chicago

1st overall

Children's Memorial Hospital

10th overall

Northwestern Memorial Hospital

Rheumatology	19	Kidney	nr
Urology	20	Respiratory	nr
Orthopedics	20	Eyes	nr
Gynecology	28	Geriatrics	nr
Neurology/neurosurgery	31	Cancer	nr
Digestive disorders	36	Heart and heart surgery	nr
Hormonal disorders	nr	Psychiatry	nr
Ear, nose, & throat	nr		

U.S. News & World Report Ranking

	<u>1998</u>	<u>1999</u>	<u>2000</u>	<u>2001</u>	<u>2002</u>	<u>2003</u>	<u>2004</u>	<u>2005</u>	<u>2006</u>	<u>2007</u>
Research activity	37	26	23	21	27	23	24	24	27	34
Student selectivity	18	24	19	16	21	12	21	13	18	14
Faculty resources	28	36	33	27	28	27	21	20	20	43
Reputation (sr faculty)	23	22	24	23	22	27	23	22	22	25
Reputation (GME dirs)	14	13	13	12	18	13	17	16	17	20
OVERALL	21	21	22	20	22	21	20	20	20	21